



# SZABO SCANDIC

Part of Europa Biosite

## Produktinformation



Forschungsprodukte & Biochemikalien



Zellkultur & Verbrauchsmaterial



Diagnostik & molekulare Diagnostik



Laborgeräte & Service

Weitere Information auf den folgenden Seiten!  
See the following pages for more information!



### Lieferung & Zahlungsart

siehe unsere [Liefer- und Versandbedingungen](#)

### Zuschläge

- Mindermengenzuschlag
- Trockeneiszuschlag
- Gefahrgutzuschlag
- Expressversand

### SZABO-SCANDIC HandelsgmbH

Quellenstraße 110, A-1100 Wien

T. +43(0)1 489 3961-0

F. +43(0)1 489 3961-7

[mail@szabo-scandic.com](mailto:mail@szabo-scandic.com)

[www.szabo-scandic.com](http://www.szabo-scandic.com)

[linkedin.com/company/szaboscandic](https://www.linkedin.com/company/szaboscandic) 

## PD-L1 antibody [29E.2A3] (PerCP-Cy5.5)

**Cat No. GTX01495-11**

<b>Host</b>	Mouse
<b>Clonality</b>	Monoclonal
<b>Isotype</b>	IgG2b
<b>Application</b>	FACS
<b>Reactivity</b>	Human

Reference ( 5 )

Package

100 test

## PRODUCT

**Summary**

The 29E.2A3 antibody reacts with human CD274 which is also known as PD-L1 or B7-H1. CD274 is a type 1 transmembrane glycoprotein and a member of the Ig superfamily. PD-L1 is a ligand for CD279 (PD-1) and plays an important role in regulating immune cell responses. CD274 is expressed on activated monocytes, macrophages, dendritic cells, and T cells.

## APPLICATION

**Application Note**

\*Optimal dilutions/concentrations should be determined by the researcher.

Suggested dilution	Dilution
FACS	1 µg (5 µl) for 10 <sup>5</sup> -10 <sup>8</sup> cells in 100 µl sample per test
Not tested in other applications.	

**Calculated MW** 33 kDa. ( [Note](#) )

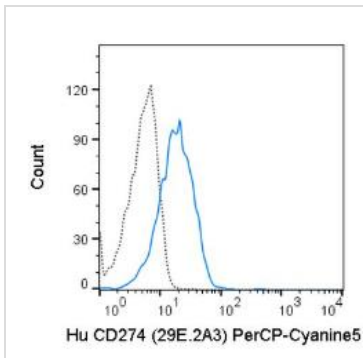
## PROPERTIES

<b>Form</b>	Liquid
<b>Buffer</b>	10 mM NaH <sub>2</sub> PO <sub>4</sub> (pH 7.2), 150 mM NaCl, 0.09% sodium azide, 0.1% gelatin
<b>Storage</b>	Store as concentrated solution. Centrifuge briefly prior to opening vial. Store at 4°C. DO NOT FREEZE. Protect from light.
<b>Concentration</b>	0.2 mg/ml (Please refer to the vial label for the specific concentration.)
<b>Purification</b>	Purified by affinity chromatography From tissue culture supernatant
<b>Conjugation</b>	Peridinin-chlorophyll proteins-Cyanine5.5 (PerCP-Cy5.5)
<b>Note</b>	For laboratory use only. Not for any clinical, therapeutic, or diagnostic use in humans or animals. Not for animal or human consumption.



For full product information, images and publications, please visit our [website](#).

## DATA IMAGES

**GTX01495-11 FACS Image**

FACS analysis of human PBMCs (PHA stimulation for 3 days) using GTX01495-11 PD-L1 antibody [29E.2A3] (PerCP-Cy5.5).

Solid line : primary antibody

Dashed line : isotype control

antibody amount : 1  $\mu$ g (5  $\mu$ l)



For full product information, images and publications, please visit our [website](#).