



# SZABO SCANDIC

Part of Europa Biosite

## Produktinformation



Forschungsprodukte & Biochemikalien



Zellkultur & Verbrauchsmaterial



Diagnostik & molekulare Diagnostik



Laborgeräte & Service

Weitere Information auf den folgenden Seiten!  
See the following pages for more information!



### Lieferung & Zahlungsart

siehe unsere [Liefer- und Versandbedingungen](#)

### Zuschläge

- Mindermengenzuschlag
- Trockeneiszuschlag
- Gefahrgutzuschlag
- Expressversand

### SZABO-SCANDIC HandelsgmbH

Quellenstraße 110, A-1100 Wien

T. +43(0)1 489 3961-0

F. +43(0)1 489 3961-7

[mail@szabo-scandic.com](mailto:mail@szabo-scandic.com)

[www.szabo-scandic.com](http://www.szabo-scandic.com)

[linkedin.com/company/szaboscandic](https://www.linkedin.com/company/szaboscandic) 

## ALKBH5 antibody

**Cat No. GTX01525**

|                    |                 |
|--------------------|-----------------|
| <b>Host</b>        | Rabbit          |
| <b>Clonality</b>   | Polyclonal      |
| <b>Isotype</b>     | IgG             |
| <b>Application</b> | WB, IHC-P, FACS |
| <b>Reactivity</b>  | Human           |

**Package**  
400 µl

## APPLICATION

**Application Note**

\*Optimal dilutions/concentrations should be determined by the researcher.

| Suggested dilution | Dilution |
|--------------------|----------|
| WB                 | 1:500    |
| IHC-P              | 1:100    |
| FACS               | 1:25     |

Not tested in other applications.

**Calculated MW** 44 kDa. ([Note](#))

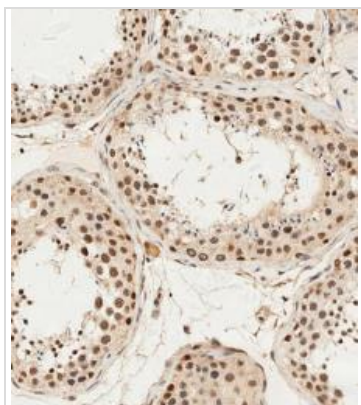
## PROPERTIES

|                      |  |
|----------------------|--|
| <b>Form</b>          | Liquid   |
| <b>Buffer</b>        | PBS, 0.09% (W/V) sodium azide  |
| <b>Storage</b>       | Store as concentrated solution. Centrifuge briefly prior to opening vial. For short-term storage (1-2 weeks), store at 4°C. For long-term storage, aliquot and store at -20°C or below. Avoid multiple freeze-thaw cycles. |
| <b>Concentration</b> | Batch dependent (Please refer to the vial label for the specific concentration.)   |
| <b>Immunogen</b>     | KLH conjugated synthetic peptide between 302-330 amino acids from the Central region of human ALKBH5.  |
| <b>Purification</b>  | Protein A purified followed by peptide affinity purification   |
| <b>Conjugation</b>   | Unconjugated   |
| <b>Note</b>          | For laboratory use only. Not for any clinical, therapeutic, or diagnostic use in humans or animals. Not for animal or human consumption.   |



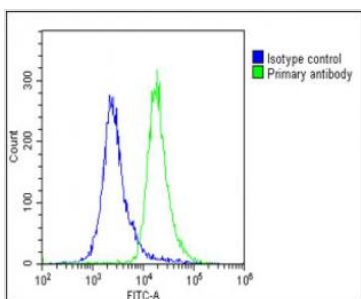
For full product information, images and publications, please visit our [website](#).

DATA IMAGES



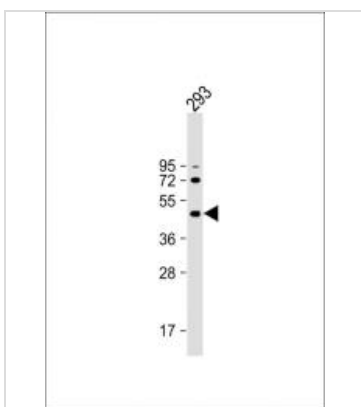
**GTX01525 IHC-P Image**

IHC-P analysis of human testis tissue sections using GTX01525 ALKBH5 antibody.  
Dilution : 1:100



**GTX01525 FACS Image**

FACS analysis of 2% PFA-fixed U2OS cells using GTX01525 ALKBH5 antibody.  
Green : Primary antibody  
Blue : Isotype control  
Permeabilization : 90% methanol for 10 min  
Antibody amount : 1µg/1x10<sup>6</sup> cells



**GTX01525 WB Image**

WB analysis of 293 whole cell lysate using GTX01525 ALKBH5 antibody.  
Dilution : 1:2000  
Loading : 20µg per lane



For full product information, images and publications, please visit our [website](#).