



# SZABO SCANDIC

Part of Europa Biosite

## Produktinformation



Forschungsprodukte & Biochemikalien



Zellkultur & Verbrauchsmaterial



Diagnostik & molekulare Diagnostik



Laborgeräte & Service

Weitere Information auf den folgenden Seiten!  
See the following pages for more information!



### Lieferung & Zahlungsart

siehe unsere [Liefer- und Versandbedingungen](#)

### Zuschläge

- Mindermengenzuschlag
- Trockeneiszuschlag
- Gefahrgutzuschlag
- Expressversand

### SZABO-SCANDIC HandelsgmbH

Quellenstraße 110, A-1100 Wien

T. +43(0)1 489 3961-0

F. +43(0)1 489 3961-7

[mail@szabo-scandic.com](mailto:mail@szabo-scandic.com)

[www.szabo-scandic.com](http://www.szabo-scandic.com)

[linkedin.com/company/szaboscandic](https://www.linkedin.com/company/szaboscandic) 

## VDAC1 antibody [GT1235]

**Cat No. GTX01543**

|                    |                   |
|--------------------|-------------------|
| <b>Host</b>        | Rabbit            |
| <b>Clonality</b>   | Monoclonal        |
| <b>Isotype</b>     | IgG               |
| <b>Application</b> | WB, ICC/IF, IHC-P |
| <b>Reactivity</b>  | Human, Mouse, Rat |

**Package**  
100 µl

## APPLICATION

**Application Note**

\*Optimal dilutions/concentrations should be determined by the researcher.

| Suggested dilution | Dilution     |
|--------------------|--------------|
| WB                 | 1:500-1:2000 |
| ICC/IF             | 1:50-1:200   |
| IHC-P              | 1:50-1:200   |

Not tested in other applications.

**Calculated MW** 31 kDa. ([Note](#))

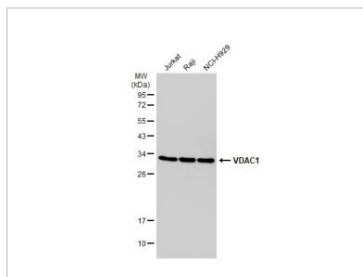
## PROPERTIES

|                      |  |
|----------------------|--|
| <b>Form</b>          | Liquid   |
| <b>Buffer</b>        | PBS (pH 7.3), 0.02% sodium azide, 50% glycerol   |
| <b>Storage</b>       | Store as concentrated solution. Centrifuge briefly prior to opening vial. For short-term storage (1-2 weeks), store at 4°C. For long-term storage, aliquot and store at -20°C or below. Avoid multiple freeze-thaw cycles. |
| <b>Concentration</b> | Batch dependent (Please refer to the vial label for the specific concentration.)   |
| <b>Immunogen</b>     | A synthesized peptide derived from human VDAC1.  |
| <b>Purification</b>  | Purified by affinity chromatography  |
| <b>Conjugation</b>   | Unconjugated   |
| <b>Note</b>          | For laboratory use only. Not for any clinical, therapeutic, or diagnostic use in humans or animals. Not for animal or human consumption.   |



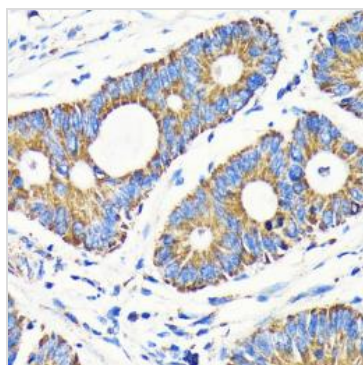
For full product information, images and publications, please visit our [website](#).

DATA IMAGES



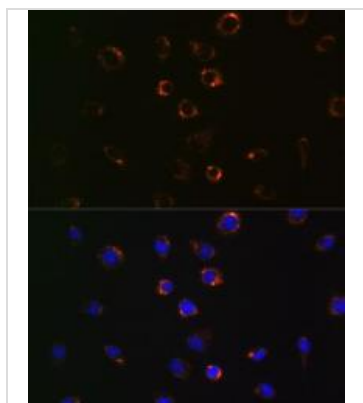
**GTX01543 WB Image**

Various whole cell extracts (30 µg) were separated by 12% SDS-PAGE, and the membrane was blotted with VDAC1 antibody [GT1235] (GTX01543) diluted at 1:1000. The HRP-conjugated anti-rabbit IgG antibody (GTX213110-01) was used to detect the primary antibody.



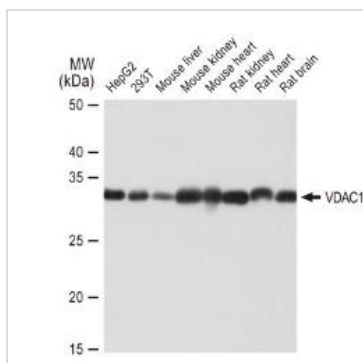
**GTX01543 IHC-P Image**

IHC-P analysis of human colon carcinoma tissue section using GTX01543 VDAC1 antibody [GT1235].  
Dilution : 1:100



**GTX01543 ICC/IF Image**

ICC/IF analysis of L929 cells using GTX01543 VDAC1 antibody [GT1235].  
Blue : DAPI



**GTX01543 WB Image**

WB analysis of various samples using GTX01543 VDAC1 antibody [GT1235].  
Dilution : 1:1000  
Loading : 25 µg



For full product information, images and publications, please visit our [website](#).