



SZABO SCANDIC

Part of Europa Biosite

Produktinformation



Forschungsprodukte & Biochemikalien



Zellkultur & Verbrauchsmaterial



Diagnostik & molekulare Diagnostik



Laborgeräte & Service

Weitere Information auf den folgenden Seiten!
See the following pages for more information!



Lieferung & Zahlungsart

siehe unsere [Liefer- und Versandbedingungen](#)

Zuschläge

- Mindermengenzuschlag
- Trockeneiszuschlag
- Gefahrgutzuschlag
- Expressversand

SZABO-SCANDIC HandelsgmbH

Quellenstraße 110, A-1100 Wien

T. +43(0)1 489 3961-0

F. +43(0)1 489 3961-7

mail@szabo-scandic.com

www.szabo-scandic.com

[linkedin.com/company/szaboscandic](https://www.linkedin.com/company/szaboscandic) 

SARS-CoV-2 (COVID-19) Spike S1 protein, His and Avi tag (active)

Cat No. GTX01548-pro

Application	ELISA, Functional Assay
Species	SARS Coronavirus 2

Package
100 µg

APPLICATION

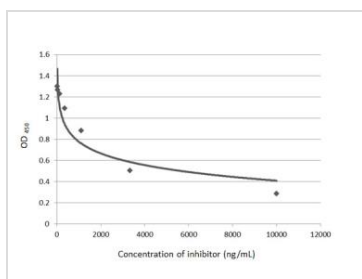
Application Note

Activity was measured by its binding ability in a functional ELISA. Immobilized SARS-CoV-2 (COVID-19) Spike S1 protein at 0.5 µg/mL (100 µL/well) can bind Recombinant Human ACE2 with a linear range of 0.06-0.25 µg/mL.

PROPERTIES

Form	Lyophilized powder
Buffer	Lyophilized from 0.22 µm-filtered PBS (pH 7.4). Reconstitute with distilled water to a concentration of 0.1-0.5 mg/mL.
Storage	Store at -20°C or below. After reconstitution, keep as concentrated solution. Avoid freeze-thaw cycles.
Region/Sequence	Gln14-Arg683 of SARS-CoV-2 (COVID-19) Spike S1 protein (Accession #YP_009724390.1) fused with a 6×His tag and Avi at the C-terminus.
Expression System	HEK293 cells
Purity	> 95% by SDS-PAGE
Endotoxin	< 0.1 EU/µg (determined by LAL method)
Conjugation	Unconjugated
Note	For laboratory use only. Not for any clinical, therapeutic, or diagnostic use in humans or animals. Not for animal or human consumption.

DATA IMAGES

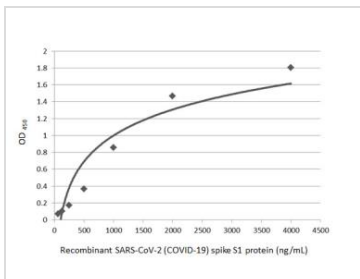


GTX01548-pro Functional Assay Image

Inhibition ELISA analysis of immobilized recombinant SARS-CoV-2 (COVID-19) Spike S1 protein, His and Avi tag (active) (GTX01548-pro) (coated at 2 µg/mL) inhibiting by SARS-CoV-2 (COVID-19) Spike RBD antibody (GTX135709) (14-10000 ng/mL), and binding to soluble recombinant Human ACE2 (ECD) protein, mouse IgG Fc tag (GTX135683-pro) (3000 ng/mL). Bound protein was detected by Goat Anti-Mouse IgG antibody (HRP) (GTX213111-01) (1:10000).

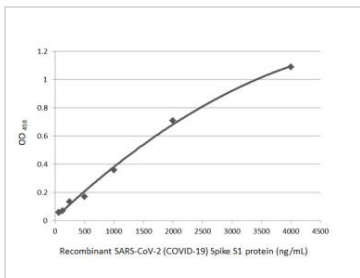


For full product information, images and publications, please visit our [website](#).



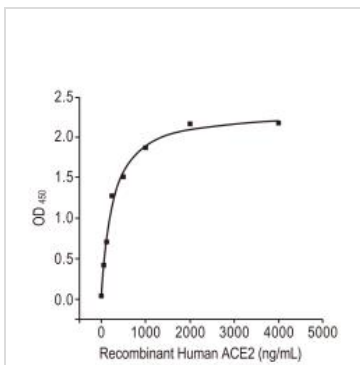
GTX01548-pro ELISA Image

Indirect ELISA analysis performed by coating plate with recombinant SARS-CoV-2 (COVID-19) spike S1 protein (GTX01548-pro) (62.5-4000 ng/mL). Coated protein probed with SARS-CoV-2 (COVID-19) Spike antibody (GTX135356) (1 µg/mL). Rabbit IgG antibody (HRP) (GTX213110-01) (1:10000) detected bound primary antibody.



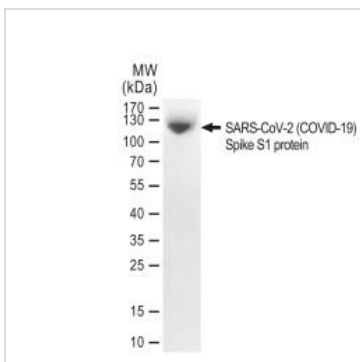
GTX01548-pro ELISA Image

Indirect ELISA analysis performed by coating plate with recombinant SARS-CoV-2 (COVID-19) Spike S1 protein, His and Avi tag (active) protein (GTX01548-pro) (4000-62.5 ng/mL). Coated protein probed with SARS-CoV-2 (COVID-19) Spike antibody (GTX135360) (1 µg/mL). Rabbit IgG antibody (HRP) (GTX213110-01) (1:10000) detected bound primary antibody.



GTX01548-pro Functional Assay Image

Functional ELISA analysis of immobilized GTX01548-pro SARS-CoV-2 (COVID-19) Spike S1 protein (active) at 0.5µg/mL (100 µL/well) can bind recombinant human ACE2 with a linear range of 0.06-0.25µg/mL.



GTX01548-pro Image

SDS-PAGE of GTX01548-pro SARS-CoV-2 (COVID-19) Spike S1 protein (active).



For full product information, images and publications, please visit our [website](#).