



# SZABO SCANDIC

Part of Europa Biosite

## Produktinformation



Forschungsprodukte & Biochemikalien



Zellkultur & Verbrauchsmaterial



Diagnostik & molekulare Diagnostik



Laborgeräte & Service

Weitere Information auf den folgenden Seiten!  
See the following pages for more information!



### Lieferung & Zahlungsart

siehe unsere [Liefer- und Versandbedingungen](#)

### Zuschläge

- Mindermengenzuschlag
- Trockeneiszuschlag
- Gefahrgutzuschlag
- Expressversand

### SZABO-SCANDIC HandelsgmbH

Quellenstraße 110, A-1100 Wien

T. +43(0)1 489 3961-0

F. +43(0)1 489 3961-7

[mail@szabo-scandic.com](mailto:mail@szabo-scandic.com)

[www.szabo-scandic.com](http://www.szabo-scandic.com)

[linkedin.com/company/szaboscandic](https://www.linkedin.com/company/szaboscandic) 

# Human ACE2 (ECD) protein, His and Avi tag (active)

## Cat No. GTX01550-pro

<b>Application</b>	ELISA, Functional Assay
<b>Species</b>	Human

**Package**  
100 µg

### APPLICATION

**Calculated MW** 92 kDa. ([Note](#))

### PROPERTIES

**Form** Lyophilized powder

**Buffer** Lyophilized from 0.22 µm-filtered PBS (pH 7.4). Reconstitute with distilled water to a concentration of 0.1-0.5 mg/ml.

**Storage** Store at -20°C or below. After reconstitution, keep as concentrated solution. Avoid freeze-thaw cycles.

**Region/Sequence** C-terminal 6×His and Avi tagged; Gln18-Ser740 of human ACE2 (Accession #Q9BYF1)

**Expression System** HEK293 cells

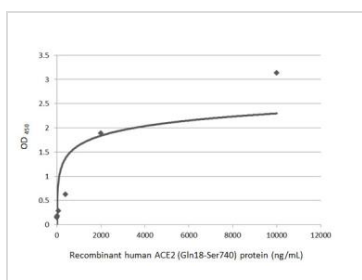
**Purity** > 95 % by SDS-PAGE

**Endotoxin** < 0.1 EU/µg (determined by LAL method)

**Conjugation** Unconjugated

**Note** For laboratory use only. Not for any clinical, therapeutic, or diagnostic use in humans or animals. Not for animal or human consumption.

### DATA IMAGES

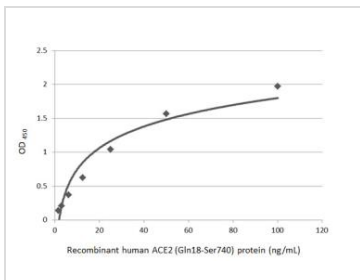


#### GTX01550-pro Functional Assay Image

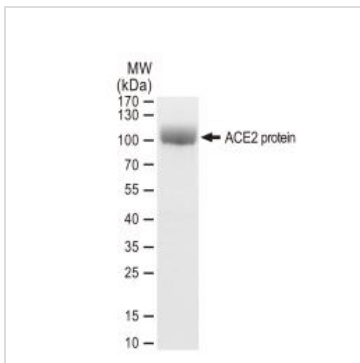
Functional ELISA analysis of immobilized recombinant SARS-CoV-2 (COVID-19) Spike RBD protein, His tag (active) (GTX01546-pro) (coated at 4 µg/mL) binding to soluble recombinant Human ACE2 (ECD) protein, His and Avi tag (GTX01550-pro) (0.64-10,000 ng/mL). Bound protein was detected by ACE2 antibody [N1N2], N-term (GTX101395) (0.1 µg/mL) and Rabbit IgG antibody (HRP) (GTX213110-01) (1:10000) detected bound primary antibody.



For full product information, images and publications, please visit our [website](#).


**GTx01550-pro ELISA Image**

Indirect ELISA analysis performed by coating plate with recombinant Human ACE2 (ECD) protein, His and Avi tag protein (GTx01550-pro) (1.56-100 ng/mL). Coated protein probed with ACE2 antibody [N1N2], N-term (GTx101395) (0.1 µg/mL). Rabbit IgG antibody (HRP) (GTx213110-01) (1:10000) detected bound primary antibody.


**GTx01550-pro Image**

SDS-PAGE of GTx01550-pro Human ACE2 (ECD) protein, His and Avi tag.



For full product information, images and publications, please visit our [website](#).