



SZABO SCANDIC

Part of Europa Biosite

Produktinformation



Forschungsprodukte & Biochemikalien



Zellkultur & Verbrauchsmaterial



Diagnostik & molekulare Diagnostik



Laborgeräte & Service

Weitere Information auf den folgenden Seiten!
See the following pages for more information!



Lieferung & Zahlungsart

siehe unsere [Liefer- und Versandbedingungen](#)

Zuschläge

- Mindermengenzuschlag
- Trockeneiszuschlag
- Gefahrgutzuschlag
- Expressversand

SZABO-SCANDIC HandelsgmbH

Quellenstraße 110, A-1100 Wien

T. +43(0)1 489 3961-0

F. +43(0)1 489 3961-7

mail@szabo-scandic.com

www.szabo-scandic.com

[linkedin.com/company/szaboscandic](https://www.linkedin.com/company/szaboscandic) 

SARS-CoV-2 (COVID-19) Spike S1 protein, His tag (active)

Cat No. GTX01554-pro

Application	ELISA, Functional Assay
Species	SARS Coronavirus 2

Package
100 µg

APPLICATION

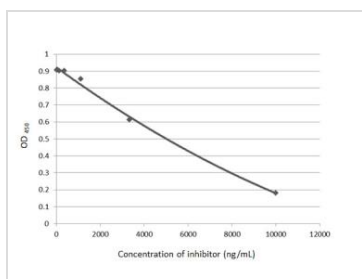
Application Note

Activity was measured by its binding ability in a functional ELISA. Immobilized Recombinant Human ACE2 at 2 µg/ml (100 µl/well) can bind Recombinant nCoV-S1. The EC₅₀ of SARS-CoV-2 (COVID-19) Spike S1 protein is 0.25-0.45 µg/ml.

PROPERTIES

Form	Lyophilized powder
Buffer	Lyophilized from 0.22 µm filtered PBS (pH 7.4). Reconstitute with distilled water to a concentration of 0.1-0.5 mg/ml.
Storage	Store at -20°C or below. After reconstitution, the protein solution is stable at -20 °C for 1 month, at 4°C for up to 1 week. Avoid freeze-thaw cycles.
Region/Sequence	Val16-Arg685 of SARS-CoV-2 (COVID-19) Spike S1 protein (Accession #YP_009724390.1) fused with a 6×His tag at the C-terminus.
Expression System	HEK293 cells
Purity	> 90% by SDS-PAGE
Endotoxin	< 1.0 EU/µg (determined by the LAL method)
Conjugation	Unconjugated
Note	For laboratory use only. Not for any clinical, therapeutic, or diagnostic use in humans or animals. Not for animal or human consumption.

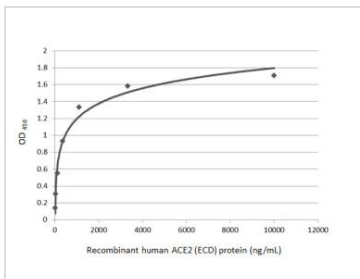
DATA IMAGES

**GTX01554-pro ELISA Image**

Inhibition analysis of immobilized recombinant SARS-CoV-2 (COVID-19) Spike S1 protein, His tag (active) (GTX01554-pro) (coated at 2 µg/mL) binding to soluble recombinant Human ACE2 (ECD) protein, mouse IgG Fc tag (GTX135683-pro) (1000 ng/mL). ACE2 binding was inhibited by increasing concentrations of SARS-CoV-2 (COVID-19) Spike RBD antibody (GTX135709) (14-10000 ng/mL). Bound ACE2 protein was detected by Goat Anti-Mouse IgG antibody (HRP) (GTX213111-01) (1:10000).

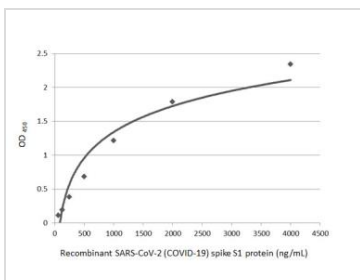


For full product information, images and publications, please visit our [website](#).



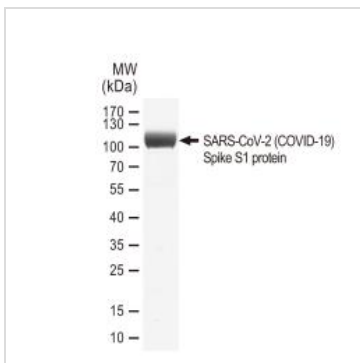
GTX01554-pro Functional Assay Image

Functional ELISA analysis of immobilized recombinant SARS-CoV-2 (COVID-19) Spike S1 protein, His tag (active) (GTX01554-pro) (coated at 2 µg/mL) binding to soluble recombinant Human ACE2 (ECD) protein, mouse IgG Fc tag (GTX135683-pro) (14-10000 ng/mL). Bound protein was detected by Goat Anti-Mouse IgG antibody (HRP) (GTX213111-01) (1:10000).



GTX01554-pro ELISA Image

Indirect ELISA analysis performed by coating plate with recombinant SARS-CoV-2 (COVID-19) Spike S1 protein, His tag (active) protein (GTX01554-pro) (4000-62.5 ng/mL). Coated protein probed with SARS-CoV-2 (COVID-19) Spike S1 antibody (GTX135384) (1 µg/mL). Rabbit IgG antibody (HRP) (GTX213110-01) (1:10000) detected bound primary antibody.



GTX01554-pro Image

SDS-PAGE of GTX01554-pro SARS-CoV-2 (COVID-19) Spike S1 protein, His tag (active).



For full product information, images and publications, please visit our [website](https://www.genetex.com).