



SZABO SCANDIC

Part of Europa Biosite

Produktinformation



Forschungsprodukte & Biochemikalien



Zellkultur & Verbrauchsmaterial



Diagnostik & molekulare Diagnostik



Laborgeräte & Service

Weitere Information auf den folgenden Seiten!
See the following pages for more information!



Lieferung & Zahlungsart

siehe unsere [Liefer- und Versandbedingungen](#)

Zuschläge

- Mindermengenzuschlag
- Trockeneiszuschlag
- Gefahrgutzuschlag
- Expressversand

SZABO-SCANDIC HandelsgmbH

Quellenstraße 110, A-1100 Wien

T. +43(0)1 489 3961-0

F. +43(0)1 489 3961-7

mail@szabo-scandic.com

www.szabo-scandic.com

[linkedin.com/company/szaboscandic](https://www.linkedin.com/company/szaboscandic) 

Tau (phospho Thr231) antibody

Cat No. GTX01563

Host	Rabbit
Clonality	Polyclonal
Isotype	IgG
Application	WB
Reactivity	Human, Mouse, Rat

Package
100 µl

APPLICATION

Application Note

*Optimal dilutions/concentrations should be determined by the researcher.

Suggested dilution	Dilution
WB	1:300-1:1000

Not tested in other applications.

Calculated MW 79 kDa. ([Note](#))

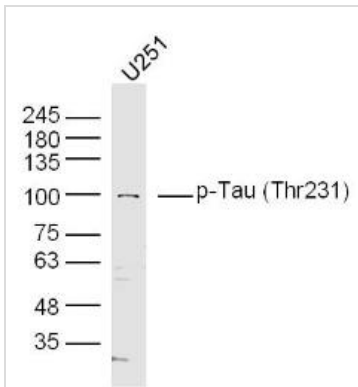
PROPERTIES

Form	Liquid
Buffer	1% BSA, 50% glycerol, 0.09% sodium azide
Storage	Store as concentrated solution. Centrifuge briefly prior to opening vial. For short-term storage (1-2 weeks), store at 4°C. For long-term storage, aliquot and store at -20°C or below. Avoid multiple freeze-thaw cycles.
Concentration	1 mg/ml (Please refer to the vial label for the specific concentration.)
Immunogen	KLH conjugated synthetic phosphopeptide derived from human Tau around the phosphorylation site of Thr231 [VR(p-T)PP]
Purification	Protein A purified
Conjugation	Unconjugated
Note	For laboratory use only. Not for any clinical, therapeutic, or diagnostic use in humans or animals. Not for animal or human consumption.



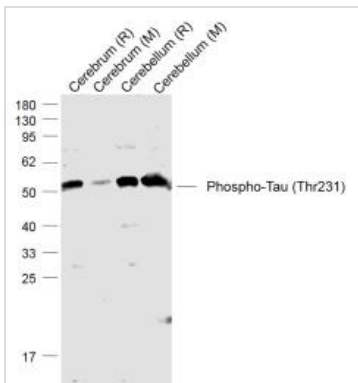
For full product information, images and publications, please visit our [website](#).

DATA IMAGES



GTX01563 WB Image

WB analysis of U251 cell lysate using GTX01563 Tau (phospho Thr231) antibody.
Dilution : 1:300



GTX01563 WB Image

WB analysis of various samples using GTX01563 Tau (phospho Thr231) antibody.
Lane 1 : Rat Cerebrum lysates
Lane 2 : Mouse Cerebrum lysates
Lane 3 : Rat Cerebellum lysates
Lane 4 : Mouse Cerebellum lysates
Dilution : 1:1000



For full product information, images and publications, please visit our [website](#).