



SZABO SCANDIC

Part of Europa Biosite

Produktinformation



Forschungsprodukte & Biochemikalien



Zellkultur & Verbrauchsmaterial



Diagnostik & molekulare Diagnostik



Laborgeräte & Service

Weitere Information auf den folgenden Seiten!
See the following pages for more information!



Lieferung & Zahlungsart

siehe unsere [Liefer- und Versandbedingungen](#)

Zuschläge

- Mindermengenzuschlag
- Trockeneiszuschlag
- Gefahrgutzuschlag
- Expressversand

SZABO-SCANDIC HandelsgmbH

Quellenstraße 110, A-1100 Wien

T. +43(0)1 489 3961-0

F. +43(0)1 489 3961-7

mail@szabo-scandic.com

www.szabo-scandic.com

[linkedin.com/company/szaboscandic](https://www.linkedin.com/company/szaboscandic) 

TRAIL antibody

Cat No. GTX01564

| | |
|--------------------|-------------------|
| Host | Rabbit |
| Clonality | Polyclonal |
| Isotype | IgG |
| Application | WB, IHC-P |
| Reactivity | Human, Mouse, Rat |

Package
100 µl

APPLICATION

Application Note

*Optimal dilutions/concentrations should be determined by the researcher.

| Suggested dilution | Dilution |
|--------------------|--------------|
| WB | 1:300-1:1000 |
| IHC-P | 1:200-1:400 |

Not tested in other applications.

Calculated MW 33 kDa. ([Note](#))

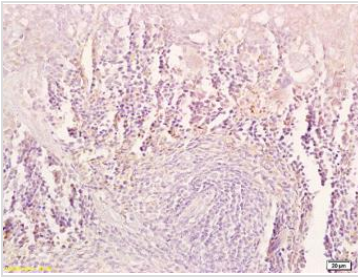
PROPERTIES

| | |
|----------------------|--|
| Form | Liquid |
| Buffer | 1% BSA, 50% glycerol, 0.09% sodium azide |
| Storage | Store as concentrated solution. Centrifuge briefly prior to opening vial. For short-term storage (1-2 weeks), store at 4°C. For long-term storage, aliquot and store at -20°C or below. Avoid multiple freeze-thaw cycles. |
| Concentration | 1 mg/ml (Please refer to the vial label for the specific concentration.) |
| Immunogen | KLH conjugated synthetic peptide derived from human TRAIL (aa 215-265). |
| Purification | Protein A purified |
| Conjugation | Unconjugated |
| Note | For laboratory use only. Not for any clinical, therapeutic, or diagnostic use in humans or animals. Not for animal or human consumption. |

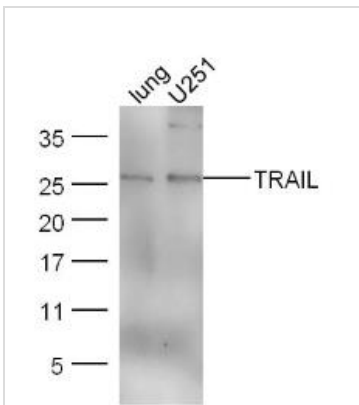


For full product information, images and publications, please visit our [website](#).

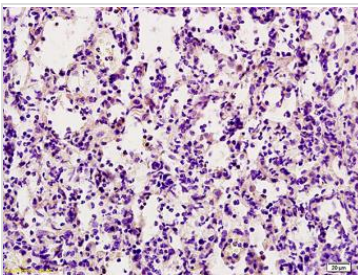
DATA IMAGES

**GTX01564 IHC-P Image**

IHC-P analysis of mouse spleen tissue using GTX01564 TRAIL antibody.
Dilution : 1:200

**GTX01564 WB Image**

WB analysis of various sample lysates using GTX01564 TRAIL antibody.
Lane 1 : Mouse lung lysates
Lane 2 : U251 cell lysates
Dilution : 1:300

**GTX01564 IHC-P Image**

IHC-P analysis of rat lung tissue using GTX01564 TRAIL antibody.
Dilution : 1:200



For full product information, images and publications, please visit our [website](#).