



SZABO SCANDIC

Part of Europa Biosite

Produktinformation



Forschungsprodukte & Biochemikalien



Zellkultur & Verbrauchsmaterial



Diagnostik & molekulare Diagnostik



Laborgeräte & Service

Weitere Information auf den folgenden Seiten!
See the following pages for more information!



Lieferung & Zahlungsart

siehe unsere [Liefer- und Versandbedingungen](#)

Zuschläge

- Mindermengenzuschlag
- Trockeneiszuschlag
- Gefahrgutzuschlag
- Expressversand

SZABO-SCANDIC HandelsgmbH

Quellenstraße 110, A-1100 Wien

T. +43(0)1 489 3961-0

F. +43(0)1 489 3961-7

mail@szabo-scandic.com

www.szabo-scandic.com

[linkedin.com/company/szaboscandic](https://www.linkedin.com/company/szaboscandic) 

Kiss1 antibody

Cat No. GTX01566

Host	Rabbit
Clonality	Polyclonal
Isotype	IgG
Application	WB, ICC/IF
Reactivity	Human

Package
400 µl

APPLICATION

Application Note

*Optimal dilutions/concentrations should be determined by the researcher.

Suggested dilution	Dilution
WB	1:2000
ICC/IF	1:25

Not tested in other applications.

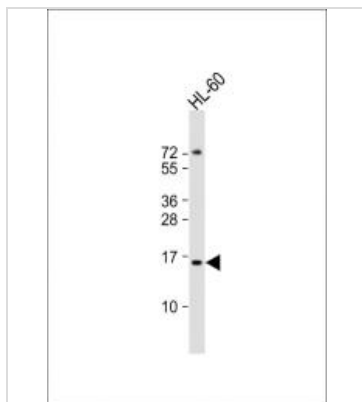
Calculated MW 15 kDa. ([Note](#))

PROPERTIES

Form	Liquid
Buffer	PBS, 0.09% (W/V) sodium azide
Storage	Store as concentrated solution. Centrifuge briefly prior to opening vial. For short-term storage (1-2 weeks), store at 4°C. For long-term storage, aliquot and store at -20°C or below. Avoid multiple freeze-thaw cycles.
Concentration	Batch dependent (Please refer to the vial label for the specific concentration.)
Immunogen	KLH conjugated synthetic peptide between 115-145 amino acids from the human region of human KISS1.
Purification	Protein A purified followed by peptide affinity purification
Conjugation	Unconjugated
Note	For laboratory use only. Not for any clinical, therapeutic, or diagnostic use in humans or animals. Not for animal or human consumption.



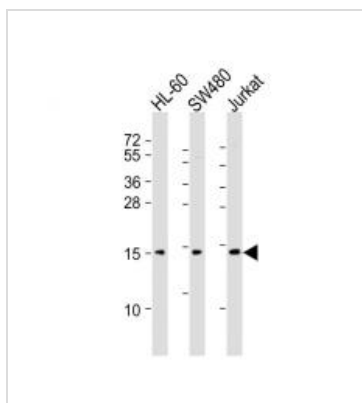
For full product information, images and publications, please visit our [website](#).

DATA IMAGES

GTX01566 WB Image

WB analysis of HL-60 whole cell lysate using GTX01566 Kiss1 antibody.

Dilution : 1:2000

Loading : 20 µg


GTX01566 WB Image

WB analysis of various sample lysates using GTX01566 Kiss1 antibody.

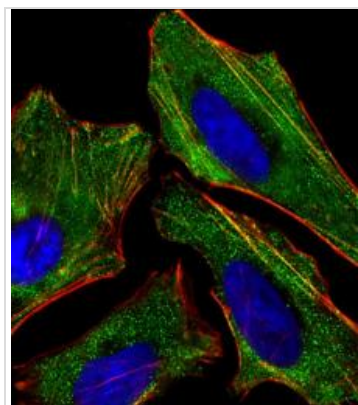
Lane 1 : HL-60 whole cell lysates

Lane 2 : SW480 whole cell lysates

Lane 3 : Jurkat whole cell lysates

Dilution : 1:2000

Loading : 20 µg per lane


GTX01566 ICC/IF Image

ICC/IF analysis of 4% PFA-fixed HeLa cells using GTX01566 Kiss1 antibody.

Green : Primary antibody

Red : F-actin

Blue : DAPI

Permeabilization : 0.1% Triton X-100

Dilution : 1:25



For full product information, images and publications, please visit our [website](#).