



SZABO SCANDIC

Part of Europa Biosite

Produktinformation



Forschungsprodukte & Biochemikalien



Zellkultur & Verbrauchsmaterial



Diagnostik & molekulare Diagnostik



Laborgeräte & Service

Weitere Information auf den folgenden Seiten!
See the following pages for more information!



Lieferung & Zahlungsart

siehe unsere [Liefer- und Versandbedingungen](#)

Zuschläge

- Mindermengenzuschlag
- Trockeneiszuschlag
- Gefahrgutzuschlag
- Expressversand

SZABO-SCANDIC HandelsgmbH

Quellenstraße 110, A-1100 Wien

T. +43(0)1 489 3961-0

F. +43(0)1 489 3961-7

mail@szabo-scandic.com

www.szabo-scandic.com

[linkedin.com/company/szaboscandic](https://www.linkedin.com/company/szaboscandic) 

DRP1 (phospho Ser637) antibody

Cat No. GTX01567

Host	Rabbit
Clonality	Polyclonal
Isotype	IgG
Application	WB, ICC/IF, IHC-P, ELISA
Reactivity	Human

Package
100 µl

APPLICATION

Application Note

*Optimal dilutions/concentrations should be determined by the researcher.

Suggested dilution	Dilution
WB	1:1000-1:3000
ICC/IF	1:100-1:500
IHC-P	1:50-1:200
ELISA	Assay dependent

Not tested in other applications.

Calculated MW 82 kDa. ([Note](#))

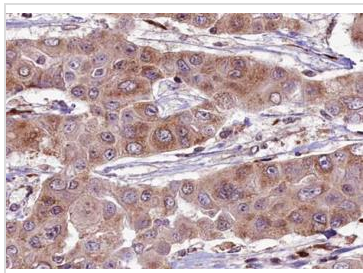
PROPERTIES

Form	Liquid
Buffer	PBS pH 7.4, 150mM NaCl, 0.02% sodium azide, 50% glycerol
Storage	Store as concentrated solution. Centrifuge briefly prior to opening vial. For short-term storage (1-2 weeks), store at 4°C. For long-term storage, aliquot and store at -20°C or below. Avoid multiple freeze-thaw cycles.
Concentration	1 mg/ml (Please refer to the vial label for the specific concentration.)
Immunogen	A synthesized peptide derived from human DRP1 around the phosphorylation site of Ser637.
Purification	Purified by sequential chromatography on phospho-peptide and non-phospho-peptide affinity columns. From serum
Conjugation	Unconjugated
Note	For laboratory use only. Not for any clinical, therapeutic, or diagnostic use in humans or animals. Not for animal or human consumption.



For full product information, images and publications, please visit our [website](#).

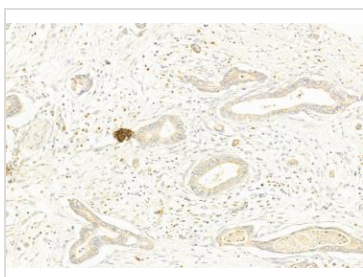
DATA IMAGES

**GTX01567 IHC-P Image**

IHC-P analysis of human liver carcinoma tissue section using GTX01567 DRP1 (phospho Ser637) antibody.

Antigen retrieval : Heat mediated antigen retrieval step in citrate buffer

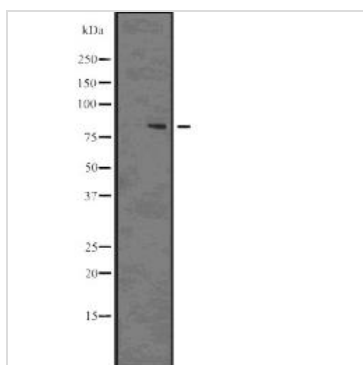
Dilution : 1:100

**GTX01567 IHC-P Image**

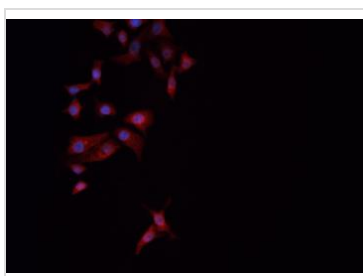
IHC-P analysis of human pancreatic cancer tissue using GTX01567 DRP1 (phospho Ser637) antibody.

Antigen retrieval : Heat mediated antigen retrieval step in citrate buffer

Dilution : 1:100

**GTX01567 WB Image**

WB analysis of 293 whole cell lysate using GTX01567 DRP1 (phospho Ser637) antibody.

**GTX01567 ICC/IF Image**

ICC/IF analysis of PFA-fixed NCI-H1299 cells using GTX01567 DRP1 (phospho Ser637) antibody.

Permeabilized : 0.1% saponin

Dilution : 1:200



For full product information, images and publications, please visit our [website](#).