



SZABO SCANDIC

Part of Europa Biosite

Produktinformation



Forschungsprodukte & Biochemikalien



Zellkultur & Verbrauchsmaterial



Diagnostik & molekulare Diagnostik



Laborgeräte & Service

Weitere Information auf den folgenden Seiten!
See the following pages for more information!



Lieferung & Zahlungsart

siehe unsere [Liefer- und Versandbedingungen](#)

Zuschläge

- Mindermengenzuschlag
- Trockeneiszuschlag
- Gefahrgutzuschlag
- Expressversand

SZABO-SCANDIC HandelsgmbH

Quellenstraße 110, A-1100 Wien

T. +43(0)1 489 3961-0

F. +43(0)1 489 3961-7

mail@szabo-scandic.com

www.szabo-scandic.com

[linkedin.com/company/szaboscandic](https://www.linkedin.com/company/szaboscandic) 

Human Ig Light chain antibody [RM129]

Cat No. GTX01571

Host	Rabbit
Clonality	Monoclonal
Isotype	IgG
Application	ICC/IF, FACS, ELISA, IHC
Reactivity	Human

Package
100 µg

APPLICATION

Application Note

*Optimal dilutions/concentrations should be determined by the researcher.

Suggested dilution	Dilution
ICC/IF	0.5-2 µg/ml
FACS	Assay dependent
ELISA	0.1-0.5 µg/ml
IHC	0.5-2 µg/ml

Not tested in other applications.

Specificity/Sensitivity RM129 reacts to both kappa and lambda light chain of human immunoglobulins. We do not recommend use of this product for Mouse,Rat,Goat,Monkey.

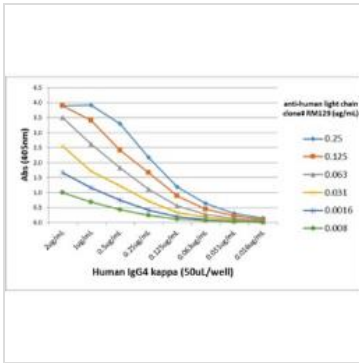
PROPERTIES

Form	Liquid
Buffer	PBS, 1% BSA, 0.09% sodium azide, 50% Glycerol
Storage	Store as concentrated solution. Centrifuge briefly prior to opening vial. For short-term storage (1-2 weeks), store at 4°C. For long-term storage, aliquot and store at -20°C or below. Avoid multiple freeze-thaw cycles.
Concentration	1 mg/ml (Please refer to the vial label for the specific concentration.)
Immunogen	Human IgG
Purification	Protein A purified From tissue culture supernatant
Conjugation	Unconjugated
Note	For laboratory use only. Not for any clinical, therapeutic, or diagnostic use in humans or animals. Not for animal or human consumption.



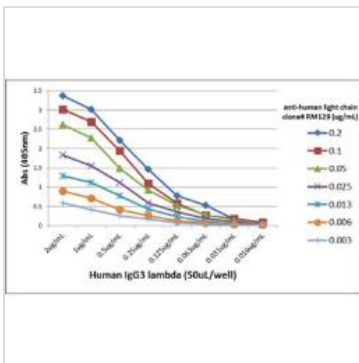
For full product information, images and publications, please visit our [website](#).

DATA IMAGES



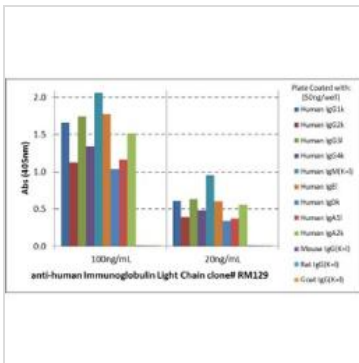
GTX01571 ELISA Image

ELISA analysis of different amounts of human IgG4k using serial dilution of GTX01571 Human Ig Light chain antibody [RM129].



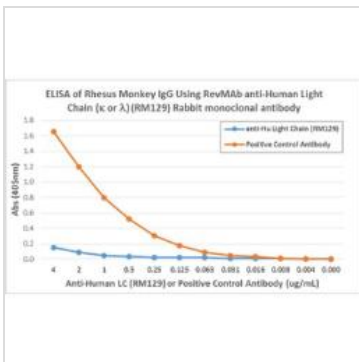
GTX01571 ELISA Image

ELISA analysis of different amounts of human IgG3λ using serial dilution of GTX01571 Human Ig Light chain antibody [RM129].



GTX01571 ELISA Image

ELISA analysis of human immunoglobulins using GTX01571 Human Ig Light Chains antibody [RM129]. This antibody does not react to mouse IgG, rat IgG, or goat IgG.



GTX01571 ELISA Image

ELISA analysis of monkey IgG using GTX01571 Human Ig Light Chains antibody [RM129]. A serial dilution of RM129 and a monkey IgG binding antibody (positive control) was used as the detection antibody.



For full product information, images and publications, please visit our [website](#).