



# SZABO SCANDIC

Part of Europa Biosite

## Produktinformation



Forschungsprodukte & Biochemikalien



Zellkultur & Verbrauchsmaterial



Diagnostik & molekulare Diagnostik



Laborgeräte & Service

Weitere Information auf den folgenden Seiten!  
See the following pages for more information!



### Lieferung & Zahlungsart

siehe unsere [Liefer- und Versandbedingungen](#)

### Zuschläge

- Mindermengenzuschlag
- Trockeneiszuschlag
- Gefahrgutzuschlag
- Expressversand

### SZABO-SCANDIC HandelsgmbH

Quellenstraße 110, A-1100 Wien

T. +43(0)1 489 3961-0

F. +43(0)1 489 3961-7

[mail@szabo-scandic.com](mailto:mail@szabo-scandic.com)

[www.szabo-scandic.com](http://www.szabo-scandic.com)

[linkedin.com/company/szaboscandic](https://www.linkedin.com/company/szaboscandic) 

## Frizzled 4 antibody

**Cat No. GTX01572**

<b>Host</b>	Rabbit
<b>Clonality</b>	Polyclonal
<b>Isotype</b>	IgG
<b>Application</b>	WB, IHC-P
<b>Reactivity</b>	Human

**Package**  
100 µl

## APPLICATION

**Application Note**

\*Optimal dilutions/concentrations should be determined by the researcher.

Suggested dilution	Dilution
WB	Assay dependent
IHC-P	5 µg/ml

Not tested in other applications.

**Calculated MW** 60 kDa. ([Note](#))

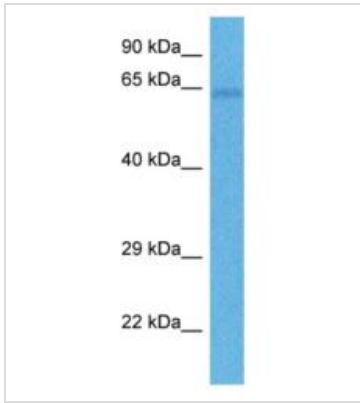
## PROPERTIES

<b>Form</b>	Liquid
<b>Buffer</b>	1x PBS, 0.09% (w/v) sodium azide, 2% sucrose
<b>Storage</b>	Store as concentrated solution. Centrifuge briefly prior to opening vial. For short-term storage (1-2 weeks), store at 4°C. For long-term storage, aliquot and store at -20°C or below. Avoid multiple freeze-thaw cycles.
<b>Concentration</b>	0.5-1 mg/ml (Please refer to the vial label for the specific concentration.)
<b>Immunogen</b>	The immunogen is a synthetic peptide directed towards the middle region of human FZD4. Synthetic peptide located within the following region: GITSGMWIWSAKTLHTWQKCSNRLVNSGKVKREKRGNGWVKPGKGETVV.
<b>Purification</b>	Purified by affinity chromatography
<b>Conjugation</b>	Unconjugated
<b>Note</b>	For laboratory use only. Not for any clinical, therapeutic, or diagnostic use in humans or animals. Not for animal or human consumption.



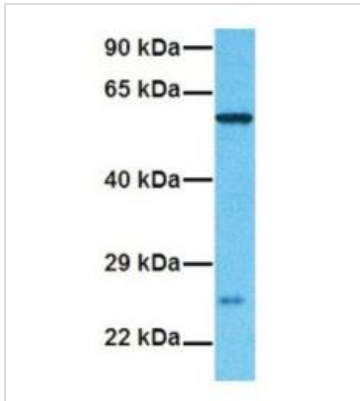
For full product information, images and publications, please visit our [website](#).

DATA IMAGES



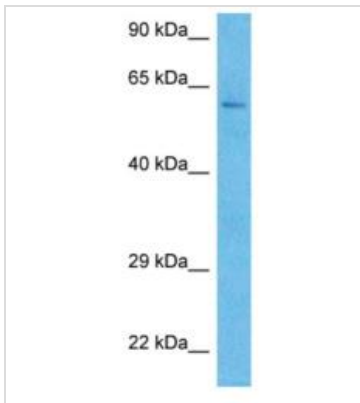
**GTX01572 WB Image**

WB analysis of human lung tumor tissue lysate using GTX01572 Frizzled 4 antibody.  
Dilution : 1.0µg/ml



**GTX01572 WB Image**

WB analysis of human fetal liver tissue lysate using GTX01572 Frizzled 4 antibody.  
Dilution : 1.0µg/ml



**GTX01572 WB Image**

WB analysis of RPMI 8226 cell lysate using GTX01572 Frizzled 4 antibody.  
Dilution : 1.0µg/ml



For full product information, images and publications, please visit our [website](#).