



# SZABO SCANDIC

Part of Europa Biosite

## Produktinformation



Forschungsprodukte & Biochemikalien



Zellkultur & Verbrauchsmaterial



Diagnostik & molekulare Diagnostik



Laborgeräte & Service

Weitere Information auf den folgenden Seiten!  
See the following pages for more information!



### Lieferung & Zahlungsart

siehe unsere [Liefer- und Versandbedingungen](#)

### Zuschläge

- Mindermengenzuschlag
- Trockeneiszuschlag
- Gefahrgutzuschlag
- Expressversand

### SZABO-SCANDIC HandelsgmbH

Quellenstraße 110, A-1100 Wien

T. +43(0)1 489 3961-0

F. +43(0)1 489 3961-7

[mail@szabo-scandic.com](mailto:mail@szabo-scandic.com)

[www.szabo-scandic.com](http://www.szabo-scandic.com)

[linkedin.com/company/szaboscandic](https://www.linkedin.com/company/szaboscandic) 

## CD33 antibody [PWS44]

Cat No. GTX01852

<b>Host</b>	Mouse
<b>Clonality</b>	Monoclonal
<b>Isotype</b>	IgG2b
<b>Application</b>	WB, IHC-P
<b>Reactivity</b>	Human, Mouse

Reference ( 5 )  
 Package  
 500 µl

## APPLICATION

## Application Note

\*Optimal dilutions/concentrations should be determined by the researcher.

Suggested dilution	Dilution
WB	Assay dependent
IHC-P	1:100

**Note : Heat Induced Epitope Retrieval (HIER) was performed in Epitope Retrieval Solution pH 9.**

Not tested in other applications.

<b>Calculated MW</b>	40 kDa. ( <a href="#">Note</a> )
<b>Specificity/Sensitivity</b>	This antibody recognizes both isoforms; CD33m (31 kD) and CD33M (67 kD).

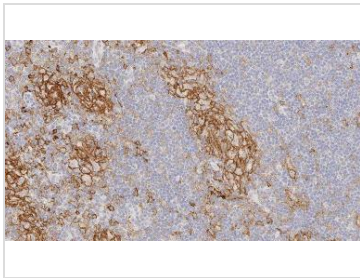
## PROPERTIES

<b>Form</b>	Liquid
<b>Buffer</b>	Tissue culture supernatant with sodium azide
<b>Storage</b>	Store as concentrated solution. Centrifuge briefly prior to opening vial. Store at 4°C. DO NOT FREEZE.
<b>Concentration</b>	Batch dependent (Please refer to the vial label for the specific concentration.)
<b>Immunogen</b>	Prokaryotic recombinant protein corresponding to a region of the C2 domain of the human CD33 molecule.
<b>Purification</b>	Unpurified
<b>Conjugation</b>	Unconjugated
<b>Note</b>	For laboratory use only. Not for any clinical, therapeutic, or diagnostic use in humans or animals. Not for animal or human consumption.



For full product information, images and publications, please visit our [website](#).

## DATA IMAGES

**GTX01852 IHC-P Image**

IHC-P analysis of human lymph node, anaplastic lymphoma tissue using GTX01852 CD33 antibody [PWS44]. Note membrane staining of neoplastic cells.



For full product information, images and publications, please visit our [website](#).