



SZABO SCANDIC

Part of Europa Biosite

Produktinformation



Forschungsprodukte & Biochemikalien



Zellkultur & Verbrauchsmaterial



Diagnostik & molekulare Diagnostik



Laborgeräte & Service

Weitere Information auf den folgenden Seiten!
See the following pages for more information!



Lieferung & Zahlungsart

siehe unsere [Liefer- und Versandbedingungen](#)

Zuschläge

- Mindermengenzuschlag
- Trockeneiszuschlag
- Gefahrgutzuschlag
- Expressversand

SZABO-SCANDIC HandelsgmbH

Quellenstraße 110, A-1100 Wien

T. +43(0)1 489 3961-0

F. +43(0)1 489 3961-7

mail@szabo-scandic.com

www.szabo-scandic.com

[linkedin.com/company/szaboscandic](https://www.linkedin.com/company/szaboscandic) 

Villin antibody [CWVB1]

Cat No. GTX01866

Host	Mouse
Clonality	Monoclonal
Isotype	IgG1
Application	WB, IHC-P, IHC-Fr
Reactivity	Human, Rat, Pig

Reference (5)
 Package
 500 µl

APPLICATION

Application Note

*Optimal dilutions/concentrations should be determined by the researcher.

Suggested dilution	Dilution
WB	1:500–1:1000
IHC-P	1:100–1:200
IHC-Fr	Assay dependent

Note : High temperature antigen unmasking technique. Standard ABC technique. Acetone fixation recommended.

Not tested in other applications.

Calculated MW 93 kDa. ([Note](#))

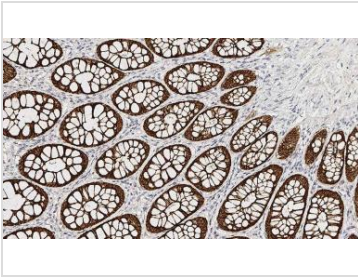
PROPERTIES

Form	Liquid
Buffer	Tissue culture supernatant, 15 mM sodium azide
Storage	Store as concentrated solution. Centrifuge briefly prior to opening vial. Store at 4°C.
Concentration	Batch dependent (Please refer to the vial label for the specific concentration.)
Immunogen	Prokaryotic recombinant protein corresponding to the C-terminal "headpiece" region of the human villin molecule.
Purification	Unpurified
Conjugation	Unconjugated
Note	For laboratory use only. Not for any clinical, therapeutic, or diagnostic use in humans or animals. Not for animal or human consumption.



For full product information, images and publications, please visit our [website](#).

DATA IMAGES

**GTX01866 IHC-P Image**

IHC-P analysis of human large bowel tissue using GTX01866 Villin antibody [CWWB1]. Note cytoplasmic staining of the epithelial cells.



For full product information, images and publications, please visit our [website](#).