



SZABO SCANDIC

Part of Europa Biosite

Produktinformation



Forschungsprodukte & Biochemikalien



Zellkultur & Verbrauchsmaterial



Diagnostik & molekulare Diagnostik



Laborgeräte & Service

Weitere Information auf den folgenden Seiten!
See the following pages for more information!



Lieferung & Zahlungsart

siehe unsere [Liefer- und Versandbedingungen](#)

Zuschläge

- Mindermengenzuschlag
- Trockeneiszuschlag
- Gefahrgutzuschlag
- Expressversand

SZABO-SCANDIC HandelsgmbH

Quellenstraße 110, A-1100 Wien

T. +43(0)1 489 3961-0

F. +43(0)1 489 3961-7

mail@szabo-scandic.com

www.szabo-scandic.com

[linkedin.com/company/szaboscandic](https://www.linkedin.com/company/szaboscandic) 

Laminin alpha 2 antibody [Mer3/22B2]

Cat No. GTX01902

| | |
|--------------------|---------------|
| Host | Mouse |
| Clonality | Monoclonal |
| Isotype | IgG1 |
| Application | IHC-Fr |
| Reactivity | Human, Rabbit |

Package
500 µl

APPLICATION

Application Note

*Optimal dilutions/concentrations should be determined by the researcher.

| Suggested dilution | Dilution |
|--------------------|------------|
| IHC-Fr | 1:50–1:100 |

Note : Freeze specimen tissue blocks in isopentane chilled in liquid nitrogen.

Not tested in other applications.

Calculated MW 344 kDa. ([Note](#))

Specificity/Sensitivity We do not recommend use of this product for Mouse,Rat,Dog,Hamster,Chicken,Pig.

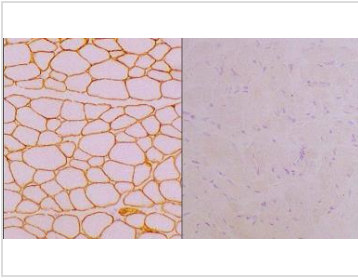
PROPERTIES

| | |
|----------------------|--|
| Form | Liquid |
| Buffer | Tissue culture supernatant with sodium azide |
| Storage | Store as concentrated solution. Centrifuge briefly prior to opening vial. For short-term storage (1-2 weeks), store at 4°C. For long-term storage, aliquot and store at -20°C or below. Avoid multiple freeze-thaw cycles. |
| Concentration | > 17 µg/ml (Please refer to the vial label for the specific concentration.) |
| Immunogen | Purified protein from placenta. |
| Purification | Unpurified |
| Conjugation | Unconjugated |
| Note | For laboratory use only. Not for any clinical, therapeutic, or diagnostic use in humans or animals. Not for animal or human consumption. |



For full product information, images and publications, please visit our [website](#).

DATA IMAGES

**GTX01902 IHC-Fr Image**

IHC-Fr analysis of human skeletal muscle tissue using GTX01902 Laminin alpha 2 antibody [Mer3/22B2]. Note membrane staining of normal muscle fibers (Left) and absence of staining of muscle fibers (Right).



For full product information, images and publications, please visit our [website](#).