



SZABO SCANDIC

Part of Europa Biosite

Produktinformation



Forschungsprodukte & Biochemikalien



Zellkultur & Verbrauchsmaterial



Diagnostik & molekulare Diagnostik



Laborgeräte & Service

Weitere Information auf den folgenden Seiten!
See the following pages for more information!



Lieferung & Zahlungsart

siehe unsere [Liefer- und Versandbedingungen](#)

Zuschläge

- Mindermengenzuschlag
- Trockeneiszuschlag
- Gefahrgutzuschlag
- Expressversand

SZABO-SCANDIC HandelsgmbH

Quellenstraße 110, A-1100 Wien

T. +43(0)1 489 3961-0

F. +43(0)1 489 3961-7

mail@szabo-scandic.com

www.szabo-scandic.com

[linkedin.com/company/szaboscandic](https://www.linkedin.com/company/szaboscandic) 

Cytokeratin 7 antibody [RN7]

Cat No. GTX01903

Host	Mouse
Clonality	Monoclonal
Isotype	IgG1
Application	IHC-P
Reactivity	Human

Package
500 µl

APPLICATION

Application Note

*Optimal dilutions/concentrations should be determined by the researcher.

Suggested dilution	Dilution
IHC-P	1:100

Note : The recommended fixative is 10% neutral-buffered formalin for paraffin-embedded tissue sections. Heat Induced Epitope Retrieval (HIER) was performed in Epitope Retrieval Solution pH6.

Not tested in other applications.

Calculated MW 51 kDa. ([Note](#))

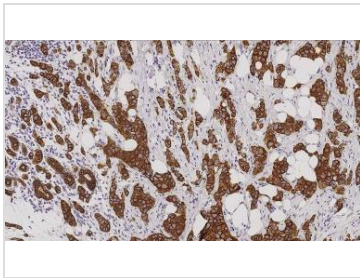
PROPERTIES

Form	Liquid
Buffer	Tissue culture supernatant with sodium azide
Storage	Store as concentrated solution. Centrifuge briefly prior to opening vial. Store at 4°C. DO NOT FREEZE.
Concentration	> 17 µg/ml (Please refer to the vial label for the specific concentration.)
Immunogen	Prokaryotic recombinant protein corresponding to part of the C-terminal region of the cytokeratin 7 intermediate filament molecule.
Purification	Unpurified
Conjugation	Unconjugated
Note	For laboratory use only. Not for any clinical, therapeutic, or diagnostic use in humans or animals. Not for animal or human consumption.



For full product information, images and publications, please visit our [website](#).

DATA IMAGES

**GTX01903 IHC-P Image**

IHC-P analysis of invasive breast carcinoma tissue using GTX01903 Cytokeratin 7 antibody [RN7]. Note the intense staining of invasive tumor cells.



For full product information, images and publications, please visit our [website](#).