



SZABO SCANDIC

Part of Europa Biosite

Produktinformation



Forschungsprodukte & Biochemikalien



Zellkultur & Verbrauchsmaterial



Diagnostik & molekulare Diagnostik



Laborgeräte & Service

Weitere Information auf den folgenden Seiten!
See the following pages for more information!



Lieferung & Zahlungsart

siehe unsere [Liefer- und Versandbedingungen](#)

Zuschläge

- Mindermengenzuschlag
- Trockeneiszuschlag
- Gefahrgutzuschlag
- Expressversand

SZABO-SCANDIC HandelsgmbH

Quellenstraße 110, A-1100 Wien

T. +43(0)1 489 3961-0

F. +43(0)1 489 3961-7

mail@szabo-scandic.com

www.szabo-scandic.com

[linkedin.com/company/szaboscandic](https://www.linkedin.com/company/szaboscandic) 

MITF antibody [34CA5]

Cat No. GTX01904

Host	Mouse
Clonality	Monoclonal
Isotype	IgG1
Application	IHC-P, IHC-Fr
Reactivity	Human

Package
500 µl

APPLICATION

Application Note

*Optimal dilutions/concentrations should be determined by the researcher.

Suggested dilution	Dilution
IHC-P	1:10–1:20
IHC-Fr	Assay dependent

Note : High temperature antigen unmasking technique using 1 mM EDTA (pH 8.0). Standard ABC technique. Acetone fixation recommended

Not tested in other applications.

Calculated MW	59 kDa. (Note)
Specificity/Sensitivity	This antibody recognizes human microphthalmia transcription factor, MITF-M isoform.

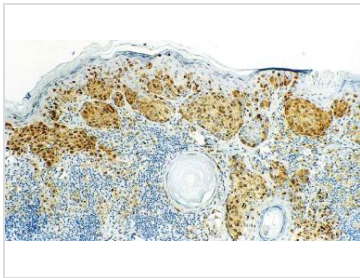
PROPERTIES

Form	Liquid
Buffer	Tissue culture supernatant, 15 mM sodium azide
Storage	Store as concentrated solution. Centrifuge briefly prior to opening vial. Store at 4°C.
Concentration	Batch dependent (Please refer to the vial label for the specific concentration.)
Immunogen	Prokaryotic recombinant protein corresponding to 111 amino acids of the N-terminal region of the MITF-M molecule.
Purification	Unpurified
Conjugation	Unconjugated
Note	For laboratory use only. Not for any clinical, therapeutic, or diagnostic use in humans or animals. Not for animal or human consumption.



For full product information, images and publications, please visit our [website](#).

DATA IMAGES

**GTX01904 IHC-P Image**

IHC-P analysis of human malignant melanoma tissue using GTX01904 MITF antibody [34CA5]. Note nuclear staining of melanoma cells.



For full product information, images and publications, please visit our [website](#).