



SZABO SCANDIC

Part of Europa Biosite

Produktinformation



Forschungsprodukte & Biochemikalien



Zellkultur & Verbrauchsmaterial



Diagnostik & molekulare Diagnostik



Laborgeräte & Service

Weitere Information auf den folgenden Seiten!
See the following pages for more information!



Lieferung & Zahlungsart

siehe unsere [Liefer- und Versandbedingungen](#)

Zuschläge

- Mindermengenzuschlag
- Trockeneiszuschlag
- Gefahrgutzuschlag
- Expressversand

SZABO-SCANDIC HandelsgmbH

Quellenstraße 110, A-1100 Wien

T. +43(0)1 489 3961-0

F. +43(0)1 489 3961-7

mail@szabo-scandic.com

www.szabo-scandic.com

[linkedin.com/company/szaboscandic](https://www.linkedin.com/company/szaboscandic) 

Ki67 antibody [MM1]

Cat No. GTX01905

Host	Mouse
Clonality	Monoclonal
Isotype	IgG1
Application	IHC-P, IHC-Fr
Reactivity	Human

Package
500 µl

APPLICATION

Application Note

*Optimal dilutions/concentrations should be determined by the researcher.

Suggested dilution	Dilution
IHC-P	1:200
IHC-Fr	Assay dependent

Note : Heat Induced Epitope Retrieval (HIER) was performed in Retrieval Solution pH 6 Optimum fixative, Zamboni's, 10 minutes at 25 °C (see Stefanini et al., 1967).

Not tested in other applications.

Calculated MW 359 kDa. ([Note](#))

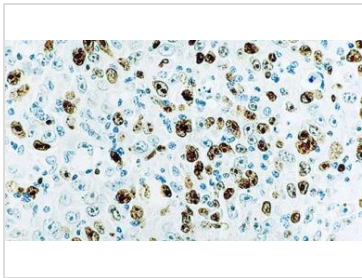
PROPERTIES

Form	Liquid
Buffer	Tissue culture supernatant with sodium azide
Storage	Store as concentrated solution. Centrifuge briefly prior to opening vial. Store at 4°C.
Concentration	Batch dependent (Please refer to the vial label for the specific concentration.)
Immunogen	Prokaryotic recombinant fusion protein corresponding to a 1086 bp Ki67 motif-containing cDNA fragment.
Purification	Unpurified
Conjugation	Unconjugated
Note	For laboratory use only. Not for any clinical, therapeutic, or diagnostic use in humans or animals. Not for animal or human consumption.



For full product information, images and publications, please visit our [website](#).

DATA IMAGES

**GTX01905 IHC-P Image**

IHC-P analysis of diffuse large B cell lymphoma tissue using GTX01905 Ki67 antibody [MM1]. Note the intense nuclear staining in proliferating B cells.



For full product information, images and publications, please visit our [website](#).