



# SZABO SCANDIC

Part of Europa Biosite

## Produktinformation



Forschungsprodukte & Biochemikalien



Zellkultur & Verbrauchsmaterial



Diagnostik & molekulare Diagnostik



Laborgeräte & Service

Weitere Information auf den folgenden Seiten!  
See the following pages for more information!



### Lieferung & Zahlungsart

siehe unsere [Liefer- und Versandbedingungen](#)

### Zuschläge

- Mindermengenzuschlag
- Trockeneiszuschlag
- Gefahrgutzuschlag
- Expressversand

### SZABO-SCANDIC HandelsgmbH

Quellenstraße 110, A-1100 Wien

T. +43(0)1 489 3961-0

F. +43(0)1 489 3961-7

[mail@szabo-scandic.com](mailto:mail@szabo-scandic.com)

[www.szabo-scandic.com](http://www.szabo-scandic.com)

[linkedin.com/company/szaboscandic](https://www.linkedin.com/company/szaboscandic) 

## Dysferlin antibody [Ham1/7B6]

Cat No. GTX01908

<b>Host</b>	Mouse
<b>Clonality</b>	Monoclonal
<b>Isotype</b>	IgG1
<b>Application</b>	IHC-P, IHC-Fr
<b>Reactivity</b>	Human

Package  
500 µl

## APPLICATION

## Application Note

\*Optimal dilutions/concentrations should be determined by the researcher.

Suggested dilution	Dilution
IHC-P	1:20–1:40
IHC-Fr	1:20–1:40

**Note : High temperature antigen retrieval using 0.01 M citrate retrieval solution (pH 6.0) is recommended.**

**The recommended fixative is 10% neutral-buffered formalin for paraffin-embedded tissue sections. This antibody requires the sections to be fixed in acetone/methanol at a ratio of 1:1 for 4 minutes at 25°C prior to incubation with the primary antibody.**

Not tested in other applications.

**Calculated MW** 237 kDa. ([Note](#))

**Specificity/Sensitivity** Reactive with the dysferlin molecule in human skeletal muscle. Also present in many non-muscle tissues.

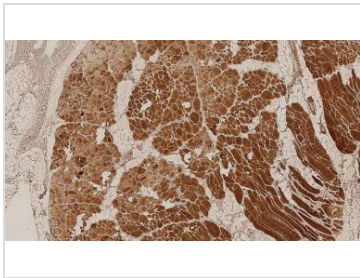
## PROPERTIES

<b>Form</b>	Liquid
<b>Buffer</b>	Tissue culture supernatant with sodium azide
<b>Storage</b>	Store as concentrated solution. Centrifuge briefly prior to opening vial. For short-term storage (1-2 weeks), store at 4°C. For long-term storage, aliquot and store at -20°C or below. Avoid multiple freeze-thaw cycles.
<b>Concentration</b>	> 180 µg/ml (Please refer to the vial label for the specific concentration.)
<b>Immunogen</b>	Synthetic peptide containing amino acids 1999-2016 of the human dysferlin molecule.
<b>Purification</b>	Unpurified
<b>Conjugation</b>	Unconjugated
<b>Note</b>	For laboratory use only. Not for any clinical, therapeutic, or diagnostic use in humans or animals. Not for animal or human consumption.



For full product information, images and publications, please visit our [website](#).

## DATA IMAGES

**GTX01908 IHC-P Image**

IHC-P analysis of human skeletal muscle tissue using GTX01908 Dysferlin antibody [Ham1/7B6].



For full product information, images and publications, please visit our [website](#).