



# SZABO SCANDIC

Part of Europa Biosite

## Produktinformation



Forschungsprodukte & Biochemikalien



Zellkultur & Verbrauchsmaterial



Diagnostik & molekulare Diagnostik



Laborgeräte & Service

Weitere Information auf den folgenden Seiten!  
See the following pages for more information!



### Lieferung & Zahlungsart

siehe unsere [Liefer- und Versandbedingungen](#)

### Zuschläge

- Mindermengenzuschlag
- Trockeneiszuschlag
- Gefahrgutzuschlag
- Expressversand

### SZABO-SCANDIC HandelsgmbH

Quellenstraße 110, A-1100 Wien

T. +43(0)1 489 3961-0

F. +43(0)1 489 3961-7

[mail@szabo-scandic.com](mailto:mail@szabo-scandic.com)

[www.szabo-scandic.com](http://www.szabo-scandic.com)

[linkedin.com/company/szaboscandic](https://www.linkedin.com/company/szaboscandic) 

## Progesterone Receptor antibody [16]

**Cat No. GTX01926**

<b>Host</b>	Mouse
<b>Clonality</b>	Monoclonal
<b>Isotype</b>	IgG1
<b>Application</b>	IHC-P
<b>Reactivity</b>	Human

**Package**  
500 µl

## APPLICATION

**Application Note**

\*Optimal dilutions/concentrations should be determined by the researcher.

Suggested dilution	Dilution
IHC-P	1:100–1:200

**Note : The recommended fixative is 10% neutral-buffered formalin for paraffin-embedded tissue sections. High temperature antigen retrieval using 0.01 M citrate retrieval solution (pH 6.0) is recommended.**

Not tested in other applications.

**Calculated MW** 99 kDa. ([Note](#))

**Specificity/Sensitivity** This antibody reacts with both A and B forms of human progesterone receptor in Western blotting procedures, but only the A form is detected in immunohistochemical procedures.

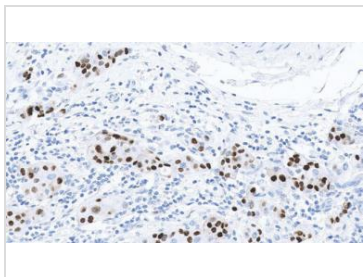
## PROPERTIES

<b>Form</b>	Liquid
<b>Buffer</b>	Tissue culture supernatant, 15 mM sodium azide
<b>Storage</b>	Store as concentrated solution. Centrifuge briefly prior to opening vial. Store at 4°C. DO NOT FREEZE.
<b>Concentration</b>	>324 µg/ml (Please refer to the vial label for the specific concentration.)
<b>Immunogen</b>	Prokaryotic recombinant protein, corresponding to the N-terminal region of the A form of human progesterone receptor.
<b>Purification</b>	Unpurified
<b>Conjugation</b>	Unconjugated
<b>Note</b>	For laboratory use only. Not for any clinical, therapeutic, or diagnostic use in humans or animals. Not for animal or human consumption.



For full product information, images and publications, please visit our [website](#).

## DATA IMAGES

**GTX01926 IHC-P Image**

IHC-P analysis of breast carcinoma tissue using GTX01926 Progesterone Receptor antibody [16]. Note the nuclear staining in a proportion of tumor cells.



For full product information, images and publications, please visit our [website](#).