



SZABO SCANDIC

Part of Europa Biosite

Produktinformation



Forschungsprodukte & Biochemikalien



Zellkultur & Verbrauchsmaterial



Diagnostik & molekulare Diagnostik



Laborgeräte & Service

Weitere Information auf den folgenden Seiten!
See the following pages for more information!



Lieferung & Zahlungsart

siehe unsere [Liefer- und Versandbedingungen](#)

Zuschläge

- Mindermengenzuschlag
- Trockeneiszuschlag
- Gefahrgutzuschlag
- Expressversand

SZABO-SCANDIC HandelsgmbH

Quellenstraße 110, A-1100 Wien

T. +43(0)1 489 3961-0

F. +43(0)1 489 3961-7

mail@szabo-scandic.com

www.szabo-scandic.com

[linkedin.com/company/szaboscandic](https://www.linkedin.com/company/szaboscandic) 

Calcitonin antibody [CL1948]

Cat No. GTX01932

Host	Mouse
Clonality	Monoclonal
Isotype	IgG2b
Application	IHC-P
Reactivity	Human

Package
500 µl

APPLICATION

Application Note

*Optimal dilutions/concentrations should be determined by the researcher.

Suggested dilution	Dilution
IHC-P	1:200

Note : Enzyme Induced Epitope Retrieval (EIER) was performed in Enzyme Proteinase K.

Not tested in other applications.

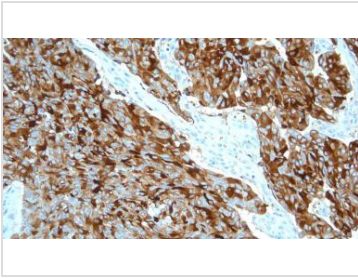
PROPERTIES

Form	Liquid
Buffer	Tissue culture supernatant, 15 mM sodium azide
Storage	Store as concentrated solution. Centrifuge briefly prior to opening vial. Store at 4°C. DO NOT FREEZE.
Concentration	>29 µg/ml (Please refer to the vial label for the specific concentration.)
Immunogen	Prokaryotic recombinant fusion protein containing 32 amino acids corresponding to the mature human calcitonin molecule.
Purification	Unpurified
Conjugation	Unconjugated
Note	For laboratory use only. Not for any clinical, therapeutic, or diagnostic use in humans or animals. Not for animal or human consumption.



For full product information, images and publications, please visit our [website](#).

DATA IMAGES

**GTX01932 IHC-P Image**

IHC-P analysis of human medullary thyroid carcinoma tissue using GTX01932 Calcitonin antibody [CL1948].



For full product information, images and publications, please visit our [website](#).