



SZABO SCANDIC

Part of Europa Biosite

Produktinformation



Forschungsprodukte & Biochemikalien



Zellkultur & Verbrauchsmaterial



Diagnostik & molekulare Diagnostik



Laborgeräte & Service

Weitere Information auf den folgenden Seiten!
See the following pages for more information!



Lieferung & Zahlungsart

siehe unsere [Liefer- und Versandbedingungen](#)

Zuschläge

- Mindermengenzuschlag
- Trockeneiszuschlag
- Gefahrgutzuschlag
- Expressversand

SZABO-SCANDIC HandelsgmbH

Quellenstraße 110, A-1100 Wien

T. +43(0)1 489 3961-0

F. +43(0)1 489 3961-7

mail@szabo-scandic.com

www.szabo-scandic.com

[linkedin.com/company/szaboscandic](https://www.linkedin.com/company/szaboscandic) 

TMEM16A antibody [K9]

Cat No. GTX01933

Host	Mouse
Clonality	Monoclonal
Isotype	IgG2b
Application	IHC-P
Reactivity	Human

Package
500 µl

APPLICATION

Application Note

*Optimal dilutions/concentrations should be determined by the researcher.

Suggested dilution	Dilution
IHC-P	1:100

Note : Heat Induced Epitope Retrieval (HIER) was performed in Citrate-based buffer, pH 6.0. Polymer detection recommended. The use of PBS-based diluents may result in increased background staining.

Not tested in other applications.

Calculated MW 114 kDa. ([Note](#))

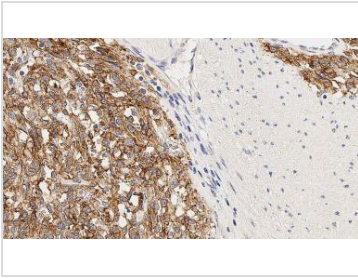
PROPERTIES

Form	Liquid
Buffer	Tissue culture supernatant, 15 mM sodium azide
Storage	Store as concentrated solution. Centrifuge briefly prior to opening vial. Store at 4°C.
Concentration	Batch dependent (Please refer to the vial label for the specific concentration.)
Immunogen	Prokaryotic recombinant protein corresponding to part of the C-terminus of the cytoplasmic domain.
Purification	Unpurified
Conjugation	Unconjugated
Note	For laboratory use only. Not for any clinical, therapeutic, or diagnostic use in humans or animals. Not for animal or human consumption.



For full product information, images and publications, please visit our [website](#).

DATA IMAGES

**GTX01933 IHC-P Image**

IHC-P analysis of human colon, gastrointestinal stromal tumor tissue using GTX01933 TMEM16A antibody [K9]. Note membrane staining of neoplastic cells.



For full product information, images and publications, please visit our [website](#).