



# SZABO SCANDIC

Part of Europa Biosite

## Produktinformation



Forschungsprodukte & Biochemikalien



Zellkultur & Verbrauchsmaterial



Diagnostik & molekulare Diagnostik



Laborgeräte & Service

Weitere Information auf den folgenden Seiten!  
See the following pages for more information!



### Lieferung & Zahlungsart

siehe unsere [Liefer- und Versandbedingungen](#)

### Zuschläge

- Mindermengenzuschlag
- Trockeneiszuschlag
- Gefahrgutzuschlag
- Expressversand

### SZABO-SCANDIC HandelsgmbH

Quellenstraße 110, A-1100 Wien

T. +43(0)1 489 3961-0

F. +43(0)1 489 3961-7

[mail@szabo-scandic.com](mailto:mail@szabo-scandic.com)

[www.szabo-scandic.com](http://www.szabo-scandic.com)

[linkedin.com/company/szaboscandic](https://www.linkedin.com/company/szaboscandic) 

## Bcl-2 antibody [bcl-2/100/D5]

Cat No. GTX01935

<b>Host</b>	Mouse
<b>Clonality</b>	Monoclonal
<b>Isotype</b>	IgG1
<b>Application</b>	IHC-P
<b>Reactivity</b>	Human

Package  
500 µl

## APPLICATION

## Application Note

\*Optimal dilutions/concentrations should be determined by the researcher.

Suggested dilution	Dilution
IHC-P	1:100

**Note : The recommended fixative is 10% neutral-buffered formalin for paraffin-embedded tissue sections. Heat Induced Epitope Retrieval (HIER) was performed in Epitope Retrieval Solution pH6.**

Not tested in other applications.

**Calculated MW** 26 kDa. ([Note](#))

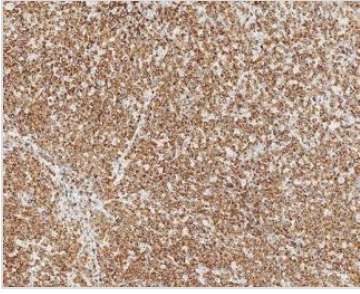
## PROPERTIES

<b>Form</b>	Liquid
<b>Buffer</b>	Tissue culture supernatant with sodium azide
<b>Storage</b>	Store as concentrated solution. Centrifuge briefly prior to opening vial. Store at 4°C. DO NOT FREEZE.
<b>Concentration</b>	>56.5 µg/ml (Please refer to the vial label for the specific concentration.)
<b>Immunogen</b>	Synthetic peptide sequence (GAAPAPGIFSSQPGC-COOH).
<b>Purification</b>	Unpurified
<b>Conjugation</b>	Unconjugated
<b>Note</b>	For laboratory use only. Not for any clinical, therapeutic, or diagnostic use in humans or animals. Not for animal or human consumption.



For full product information, images and publications, please visit our [website](#).

## DATA IMAGES

**GTX01935 IHC-P Image**

IHC-P analysis of human follicular lymphoma using GTX01935 Bcl-2 antibody [bcl-2/100/D5]. Neoplastic cells show a moderate, predominantly cytoplasmic staining reaction.



For full product information, images and publications, please visit our [website](#).