



SZABO SCANDIC

Part of Europa Biosite

Produktinformation



Forschungsprodukte & Biochemikalien



Zellkultur & Verbrauchsmaterial



Diagnostik & molekulare Diagnostik



Laborgeräte & Service

Weitere Information auf den folgenden Seiten!
See the following pages for more information!



Lieferung & Zahlungsart

siehe unsere [Liefer- und Versandbedingungen](#)

Zuschläge

- Mindermengenzuschlag
- Trockeneiszuschlag
- Gefahrgutzuschlag
- Expressversand

SZABO-SCANDIC HandelsgmbH

Quellenstraße 110, A-1100 Wien

T. +43(0)1 489 3961-0

F. +43(0)1 489 3961-7

mail@szabo-scandic.com

www.szabo-scandic.com

[linkedin.com/company/szaboscandic](https://www.linkedin.com/company/szaboscandic) 

BCL6 antibody [LN22]

Cat No. GTX01937

Host	Mouse
Clonality	Monoclonal
Isotype	IgG2b
Application	IHC-P
Reactivity	Human

Package
500 µl

APPLICATION

Application Note

*Optimal dilutions/concentrations should be determined by the researcher.

Suggested dilution	Dilution
IHC-P	1:60

Note : Heat Induced Epitope Retrieval (HIER) was performed in Epitope Retrieval Solution pH 9. The use of H₂O₂ to block endogenous peroxidase has a detrimental effect on the epitope recognized by this antibody. Solutions containing 1% or greater H₂O₂ can dramatically reduce the level of staining achievable. Blocking after unmasking can also lead to negative results. Therefore, it is recommended that endogenous peroxidase should be blocked before unmasking with 0.5% H₂O₂/methanol for 10 minutes. If this recommendation is not followed, staining intensity may be reduced.

Not tested in other applications.

Calculated MW 79 kDa. ([Note](#))

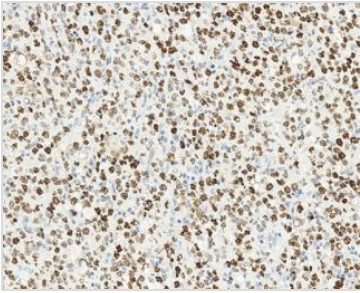
PROPERTIES

Form	Liquid
Buffer	Tissue culture supernatant with sodium azide
Storage	Store as concentrated solution. Centrifuge briefly prior to opening vial. Store at 4°C. DO NOT FREEZE.
Concentration	Batch dependent (Please refer to the vial label for the specific concentration.)
Immunogen	Prokaryotic recombinant protein corresponding to 1–350 amino acids of the N-terminus of the Bcl-6 human oncoprotein molecule.
Purification	Unpurified
Conjugation	Unconjugated
Note	For laboratory use only. Not for any clinical, therapeutic, or diagnostic use in humans or animals. Not for animal or human consumption.



For full product information, images and publications, please visit our [website](#).

DATA IMAGES

**GTX01937 IHC-P Image**

IHC-P analysis of human diffuse large B cell lymphoma using GTX01937 BCL6 antibody [LN22]. The majority of neoplastic cells show a moderate to strong nuclear staining reaction.



For full product information, images and publications, please visit our [website](#).