



SZABO SCANDIC

Part of Europa Biosite

Produktinformation



Forschungsprodukte & Biochemikalien



Zellkultur & Verbrauchsmaterial



Diagnostik & molekulare Diagnostik



Laborgeräte & Service

Weitere Information auf den folgenden Seiten!
See the following pages for more information!



Lieferung & Zahlungsart

siehe unsere [Liefer- und Versandbedingungen](#)

Zuschläge

- Mindermengenzuschlag
- Trockeneiszuschlag
- Gefahrgutzuschlag
- Expressversand

SZABO-SCANDIC HandelsgmbH

Quellenstraße 110, A-1100 Wien

T. +43(0)1 489 3961-0

F. +43(0)1 489 3961-7

mail@szabo-scandic.com

www.szabo-scandic.com

[linkedin.com/company/szaboscandic](https://www.linkedin.com/company/szaboscandic) 

Calpain 3 antibody [Calp3c/12A2]

Cat No. GTX01970

Host	Mouse
Clonality	Monoclonal
Isotype	IgG2a
Application	WB
Reactivity	Human, Mouse, Rat, Rabbit, Dog, Hamster, Chicken, Pig

Package
500 µl

APPLICATION

Application Note

*Optimal dilutions/concentrations should be determined by the researcher.

Suggested dilution	Dilution
WB	1:100

Not tested in other applications.

Calculated MW 94 kDa. ([Note](#))

Specificity/Sensitivity This antibody reacts with full-size calpain 3 (94 kD) plus an additional breakdown product at 60 kD.

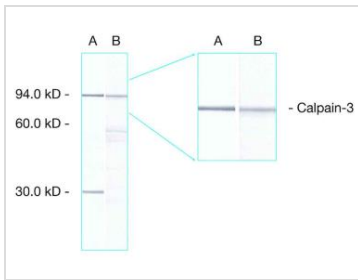
PROPERTIES

Form	Liquid
Buffer	Tissue culture supernatant, 15 mM sodium azide
Storage	Store as concentrated solution. Centrifuge briefly prior to opening vial. For short-term storage (1-2 weeks), store at 4°C. For long-term storage, aliquot and store at -20°C or below. Avoid multiple freeze-thaw cycles.
Concentration	Batch dependent (Please refer to the vial label for the specific concentration.)
Immunogen	Synthetic peptide containing amino acids 355-370 of the human calpain 3 sequence.
Purification	Unpurified
Conjugation	Unconjugated
Note	For laboratory use only. Not for any clinical, therapeutic, or diagnostic use in humans or animals. Not for animal or human consumption.



For full product information, images and publications, please visit our [website](#).

DATA IMAGES

**GTX01970 WB Image**

WB analysis of human skeletal muscle tissue lysate using GTX01970 Calpain 3 antibody [Calp3c/12A2] and GTX01970 Calpain 3 antibody [Calp3d/2C4].

Lane A : GTX01971

Lane B : GTX01970



For full product information, images and publications, please visit our [website](#).