



SZABO SCANDIC

Part of Europa Biosite

Produktinformation



Forschungsprodukte & Biochemikalien



Zellkultur & Verbrauchsmaterial



Diagnostik & molekulare Diagnostik



Laborgeräte & Service

Weitere Information auf den folgenden Seiten!
See the following pages for more information!



Lieferung & Zahlungsart

siehe unsere [Liefer- und Versandbedingungen](#)

Zuschläge

- Mindermengenzuschlag
- Trockeneiszuschlag
- Gefahrgutzuschlag
- Expressversand

SZABO-SCANDIC HandelsgmbH

Quellenstraße 110, A-1100 Wien

T. +43(0)1 489 3961-0

F. +43(0)1 489 3961-7

mail@szabo-scandic.com

www.szabo-scandic.com

[linkedin.com/company/szaboscandic](https://www.linkedin.com/company/szaboscandic) 

Emerin antibody [4G5]

Cat No. GTX01975

Host	Mouse
Clonality	Monoclonal
Isotype	IgG1
Application	IHC-P, IHC-Fr
Reactivity	Human

Package
500 µl

APPLICATION

Application Note

*Optimal dilutions/concentrations should be determined by the researcher.

Suggested dilution	Dilution
IHC-P	1:160
IHC-Fr	1:20–1:40

Note : The recommended fixative is 10% neutral-buffered formalin for paraffin-embedded tissue sections. Heat Induced Epitope Retrieval (HIER) was performed in Epitope Retrieval Solution pH 6.

This antibody requires the sections to be fixed in acetone for 10 minutes at 25°C prior to incubation with the primary antibody.

Not tested in other applications.

Calculated MW 29 kDa. ([Note](#))

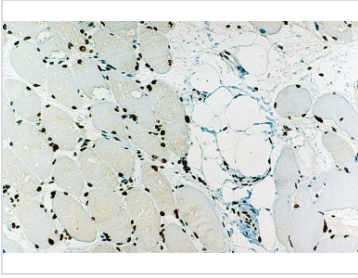
PROPERTIES

Form	Liquid
Buffer	Tissue culture supernatant with sodium azide
Storage	Store as concentrated solution. Centrifuge briefly prior to opening vial. For short-term storage (1-2 weeks), store at 4°C. For long-term storage, aliquot and store at -20°C or below. Avoid multiple freeze-thaw cycles.
Concentration	>63 µg/ml (Please refer to the vial label for the specific concentration.)
Immunogen	Prokaryotic recombinant protein corresponding to a 222 amino acid region near the N-terminus of the emerin protein.
Purification	Unpurified
Conjugation	Unconjugated
Note	For laboratory use only. Not for any clinical, therapeutic, or diagnostic use in humans or animals. Not for animal or human consumption.



For full product information, images and publications, please visit our [website](#).

DATA IMAGES

**GTX01975 IHC-P Image**

IHC-P analysis of human skeletal muscle tissue using GTX01975 Emerin antibody [4G5]. Note perinuclear staining of all cell nuclei.



For full product information, images and publications, please visit our [website](#).