



# SZABO SCANDIC

Part of Europa Biosite

## Produktinformation



Forschungsprodukte & Biochemikalien



Zellkultur & Verbrauchsmaterial



Diagnostik & molekulare Diagnostik



Laborgeräte & Service

Weitere Information auf den folgenden Seiten!  
See the following pages for more information!



### Lieferung & Zahlungsart

siehe unsere [Liefer- und Versandbedingungen](#)

### Zuschläge

- Mindermengenzuschlag
- Trockeneiszuschlag
- Gefahrgutzuschlag
- Expressversand

### SZABO-SCANDIC HandelsgmbH

Quellenstraße 110, A-1100 Wien

T. +43(0)1 489 3961-0

F. +43(0)1 489 3961-7

[mail@szabo-scandic.com](mailto:mail@szabo-scandic.com)

[www.szabo-scandic.com](http://www.szabo-scandic.com)

[linkedin.com/company/szaboscandic](https://www.linkedin.com/company/szaboscandic) 

## Angiotensinogen antibody [034]

**Cat No. GTX02046**

<b>Host</b>	Rabbit
<b>Clonality</b>	Monoclonal
<b>Isotype</b>	IgG
<b>Application</b>	IHC-P
<b>Reactivity</b>	Human

**Package**  
100 µl

## APPLICATION

**Application Note**

\*Optimal dilutions/concentrations should be determined by the researcher.

Suggested dilution	Dilution
IHC-P	1:100-1:500

Not tested in other applications.

**Calculated MW** 53 kDa. ([Note](#))

**Specificity/Sensitivity** It has cross-reactivity with human SERPINA1 protein, human SERPINA3 protein, human SERPINA5 protein, human SERPINC1 protein, human SERPIND1 protein, human SERPINF2 protein, human SERPING1 protein, and human SERPINI1 protein in ELISA assay.

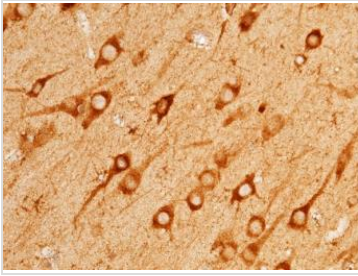
## PROPERTIES

<b>Form</b>	Liquid
<b>Buffer</b>	0.2 µm filtered PBS
<b>Storage</b>	Store as concentrated solution. Centrifuge briefly prior to opening vial. For short-term storage (1-2 weeks), store at 4°C. For long-term storage, aliquot and store at -20°C or below. Avoid multiple freeze-thaw cycles.
<b>Concentration</b>	Batch dependent (Please refer to the vial label for the specific concentration.)
<b>Immunogen</b>	Recombinant Human Angiotensinogen protein, His tag (GTX01232-pro)
<b>Purification</b>	Purified by Protein A
<b>Conjugation</b>	Unconjugated
<b>Note</b>	For laboratory use only. Not for any clinical, therapeutic, or diagnostic use in humans or animals. Not for animal or human consumption.

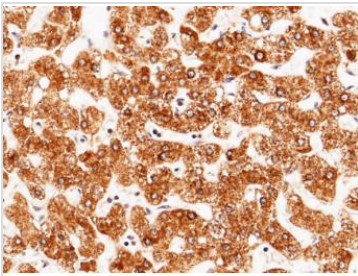


For full product information, images and publications, please visit our [website](#).

## DATA IMAGES

**GTX02046 IHC-P Image**

IHC-P analysis of human brain tissue section using GTX02046 Angiotensinogen antibody [034].  
Dilution : 1:200

**GTX02046 IHC-P Image**

IHC-P analysis of human cirrhosis tissue section using GTX02046 Angiotensinogen antibody [034].  
Dilution : 1:200



For full product information, images and publications, please visit our [website](#).