



SZABO SCANDIC

Part of Europa Biosite

Produktinformation



Forschungsprodukte & Biochemikalien



Zellkultur & Verbrauchsmaterial



Diagnostik & molekulare Diagnostik



Laborgeräte & Service

Weitere Information auf den folgenden Seiten!
See the following pages for more information!



Lieferung & Zahlungsart

siehe unsere [Liefer- und Versandbedingungen](#)

Zuschläge

- Mindermengenzuschlag
- Trockeneiszuschlag
- Gefahrgutzuschlag
- Expressversand

SZABO-SCANDIC HandelsgmbH

Quellenstraße 110, A-1100 Wien

T. +43(0)1 489 3961-0

F. +43(0)1 489 3961-7

mail@szabo-scandic.com

www.szabo-scandic.com

[linkedin.com/company/szaboscandic](https://www.linkedin.com/company/szaboscandic) 

TNF Receptor I antibody

Cat No. GTX02170

Host	Rabbit
Clonality	Polyclonal
Isotype	IgG
Application	WB, IHC-P
Reactivity	Human

Package
100 µl

APPLICATION

Application Note

*Optimal dilutions/concentrations should be determined by the researcher.

Suggested dilution	Dilution
WB	1:500-1:2000
IHC-P	1:500-1:2000

Not tested in other applications.

Calculated MW 50 kDa. ([Note](#))

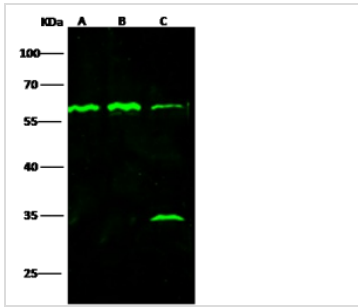
PROPERTIES

Form	Liquid
Buffer	0.2 µm filtered PBS
Storage	Store as concentrated solution. Centrifuge briefly prior to opening vial. For short-term storage (1-2 weeks), store at 4°C. For long-term storage, aliquot and store at -20°C or below. Avoid multiple freeze-thaw cycles.
Concentration	Batch dependent (Please refer to the vial label for the specific concentration.)
Immunogen	Recombinant Human TNF Receptor I protein (GTX01370-pro)
Purification	Purified by Protein A and Antigen Affinity
Conjugation	Unconjugated
Note	For laboratory use only. Not for any clinical, therapeutic, or diagnostic use in humans or animals. Not for animal or human consumption.



For full product information, images and publications, please visit our [website](#).

DATA IMAGES

**GTX02170 WB Image**

WB analysis of various samples using GTX02170 TNF Receptor I antibody.

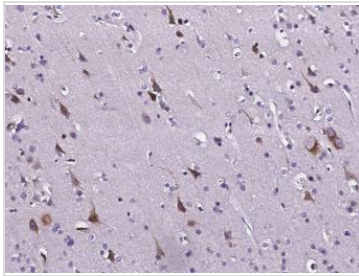
Lane A : HepG2 whole cell lysate

Lane B : 293T whole cell lysate

Lane C : THP-1 whole cell lysate

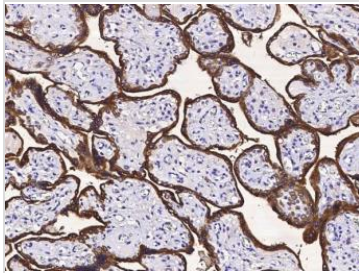
Dilution : 1:500

Loading : 30 µg

**GTX02170 IHC-P Image**

IHC-P analysis of human brain tissue section using GTX02170 TNF Receptor I antibody.

Dilution : 1:1000

**GTX02170 IHC-P Image**

IHC-P analysis of human placenta tissue section using GTX02170 TNF Receptor I antibody.

Dilution : 1:1000



For full product information, images and publications, please visit our [website](#).