



# SZABO SCANDIC

Part of Europa Biosite

## Produktinformation



Forschungsprodukte & Biochemikalien



Zellkultur & Verbrauchsmaterial



Diagnostik & molekulare Diagnostik



Laborgeräte & Service

Weitere Information auf den folgenden Seiten!  
See the following pages for more information!



### Lieferung & Zahlungsart

siehe unsere [Liefer- und Versandbedingungen](#)

### Zuschläge

- Mindermengenzuschlag
- Trockeneiszuschlag
- Gefahrgutzuschlag
- Expressversand

### SZABO-SCANDIC HandelsgmbH

Quellenstraße 110, A-1100 Wien

T. +43(0)1 489 3961-0

F. +43(0)1 489 3961-7

[mail@szabo-scandic.com](mailto:mail@szabo-scandic.com)

[www.szabo-scandic.com](http://www.szabo-scandic.com)

[linkedin.com/company/szaboscandic](https://www.linkedin.com/company/szaboscandic) 

## USP22 antibody

**Cat No. GTX02528**

<b>Host</b>	Rabbit
<b>Clonality</b>	Polyclonal
<b>Isotype</b>	IgG
<b>Application</b>	WB, IHC-P
<b>Reactivity</b>	Human

**Package**  
400 µl

## APPLICATION

**Application Note**

\*Optimal dilutions/concentrations should be determined by the researcher.

Suggested dilution	Dilution
WB	1:1000
IHC-P	1:50-1:100

Not tested in other applications.

**Calculated MW** 60 kDa. ([Note](#))

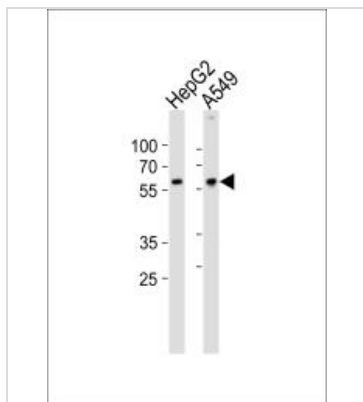
## PROPERTIES

<b>Form</b>	Liquid
<b>Buffer</b>	PBS, 0.09% (W/V) sodium azide
<b>Storage</b>	Store as concentrated solution. Centrifuge briefly prior to opening vial. For short-term storage (1-2 weeks), store at 4°C. For long-term storage, aliquot and store at -20°C or below. Avoid multiple freeze-thaw cycles.
<b>Concentration</b>	Batch dependent (Please refer to the vial label for the specific concentration.)
<b>Immunogen</b>	This USP22 antibody is generated from rabbits immunized with a KLH conjugated synthetic peptide between 351-380 amino acids from the C-terminal region of human USP22.
<b>Purification</b>	Purified by Saturated Ammonium Sulfate (SAS) precipitation followed by dialysis against PBS
<b>Conjugation</b>	Unconjugated
<b>Note</b>	For laboratory use only. Not for any clinical, therapeutic, or diagnostic use in humans or animals. Not for animal or human consumption.



For full product information, images and publications, please visit our [website](#).

DATA IMAGES

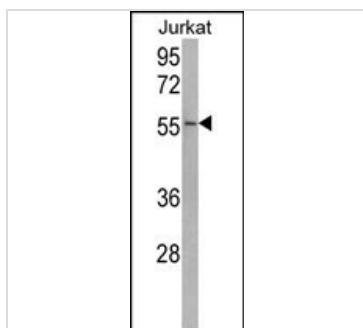


**GTX02528 WB Image**

WB analysis of various cell lysates using GTX02528 USP22 antibody.

Dilution : 1:1000

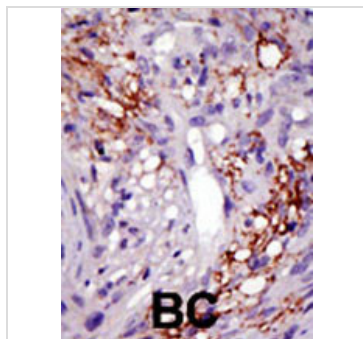
Loading : 20µg



**GTX02528 WB Image**

WB analysis of Jurkat cell lysate using GTX02528 USP22 antibody.

Loading : 35µg



**GTX02528 IHC-P Image**

IHC-P analysis of human cancer tissue using GTX02528 USP22 antibody.

BC : breast carcinoma



For full product information, images and publications, please visit our [website](#).