



SZABO SCANDIC

Part of Europa Biosite

Produktinformation



Forschungsprodukte & Biochemikalien



Zellkultur & Verbrauchsmaterial



Diagnostik & molekulare Diagnostik



Laborgeräte & Service

Weitere Information auf den folgenden Seiten!
See the following pages for more information!



Lieferung & Zahlungsart

siehe unsere [Liefer- und Versandbedingungen](#)

Zuschläge

- Mindermengenzuschlag
- Trockeneiszuschlag
- Gefahrgutzuschlag
- Expressversand

SZABO-SCANDIC HandelsgmbH

Quellenstraße 110, A-1100 Wien

T. +43(0)1 489 3961-0

F. +43(0)1 489 3961-7

mail@szabo-scandic.com

www.szabo-scandic.com

[linkedin.com/company/szaboscandic](https://www.linkedin.com/company/szaboscandic) 

PPAR gamma (phospho Ser112) antibody

Cat No. GTX02531

Host	Rabbit
Clonality	Polyclonal
Isotype	IgG
Application	WB, ICC/IF, IHC-P, ELISA
Reactivity	Human, Mouse, Rat

Package
100 µl

APPLICATION

Application Note

*Optimal dilutions/concentrations should be determined by the researcher.

Suggested dilution	Dilution
WB	1:500-1:2000
ICC/IF	1:200
IHC-P	1:50-1:200
ELISA	Assay dependent

Not tested in other applications.

Calculated MW 58 kDa. ([Note](#))

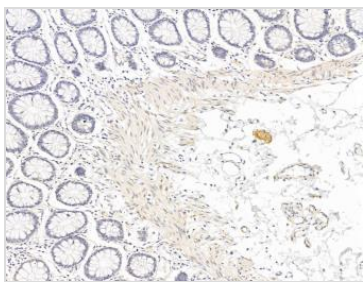
PROPERTIES

Form	Liquid
Buffer	PBS pH 7.4, 50% glycerol
Storage	Store as concentrated solution. Centrifuge briefly prior to opening vial. For short-term storage (1-2 weeks), store at 4°C. For long-term storage, aliquot and store at -20°C or below. Avoid multiple freeze-thaw cycles.
Concentration	1 mg/ml (Please refer to the vial label for the specific concentration.)
Immunogen	A synthesized peptide derived from human PPAR- gamma around the phosphorylation site of Ser112.
Purification	Purified by affinity purification via sequential chromatography on phospho-peptide and non-phospho-peptide affinity columns From serum
Conjugation	Unconjugated
Note	For laboratory use only. Not for any clinical, therapeutic, or diagnostic use in humans or animals. Not for animal or human consumption.



For full product information, images and publications, please visit our [website](#).

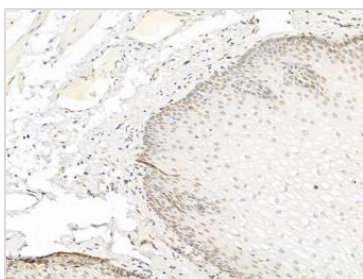
DATA IMAGES

**GTX02531 IHC-P Image**

IHC-P analysis of human colorectal cancer tissue using GTX02531 PPAR gamma (phospho Ser112) antibody.

Antigen retrieval : Heat mediated antigen retrieval step in citrate buffer was performed.

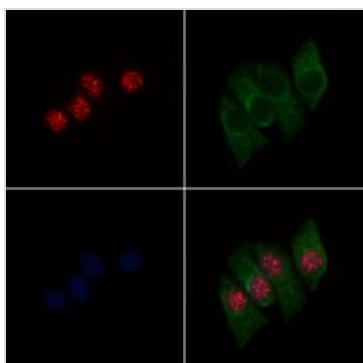
Dilution : 1:100

**GTX02531 IHC-P Image**

IHC-P analysis of human normal tissues adjacent to esophageal cancer using GTX02531 PPAR gamma (phospho Ser112) antibody.

Antigen retrieval : Heat mediated antigen retrieval step in citrate buffer was performed.

Dilution : 1:100

**GTX02531 ICC/IF Image**

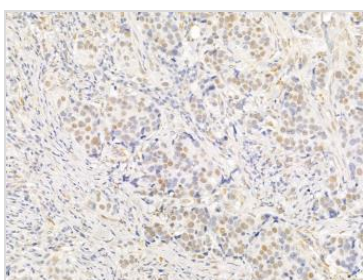
ICC/IF analysis of PFA-fixed HepG2 cells (30min of 4 μ M Forskolin treatment) using GTX02531 PPAR gamma (phospho Ser112) antibody.

Red : Primary antibody

Green : Tubulin

Blue : DAPI

Permeabilization : 0.1% Triton X-100

**GTX02531 IHC-P Image**

IHC-P analysis of human mammary cancer tissue using GTX02531 PPAR gamma (phospho Ser112) antibody.

Antigen retrieval : Heat mediated antigen retrieval step in citrate buffer was performed.

Dilution : 1:100



For full product information, images and publications, please visit our [website](#).