



SZABO SCANDIC

Part of Europa Biosite

Produktinformation



Forschungsprodukte & Biochemikalien



Zellkultur & Verbrauchsmaterial



Diagnostik & molekulare Diagnostik



Laborgeräte & Service

Weitere Information auf den folgenden Seiten!
See the following pages for more information!



Lieferung & Zahlungsart

siehe unsere [Liefer- und Versandbedingungen](#)

Zuschläge

- Mindermengenzuschlag
- Trockeneiszuschlag
- Gefahrgutzuschlag
- Expressversand

SZABO-SCANDIC HandelsgmbH

Quellenstraße 110, A-1100 Wien

T. +43(0)1 489 3961-0

F. +43(0)1 489 3961-7

mail@szabo-scandic.com

www.szabo-scandic.com

[linkedin.com/company/szaboscandic](https://www.linkedin.com/company/szaboscandic) 

Histone H3K9K14K23K27ac (Acetyl Lys9/Lys14/Lys23/Lys27) antibody

Cat No. GTX02535

Host	Rabbit
Clonality	Polyclonal
Isotype	IgG
Application	WB, ICC/IF, IHC-P
Reactivity	Human, Mouse, Rat

Package
100 µl

APPLICATION

Application Note

*Optimal dilutions/concentrations should be determined by the researcher.

Suggested dilution	Dilution
WB	1:500-1:2000
ICC/IF	1:100-1:500
IHC-P	1:50-1:200

Not tested in other applications.

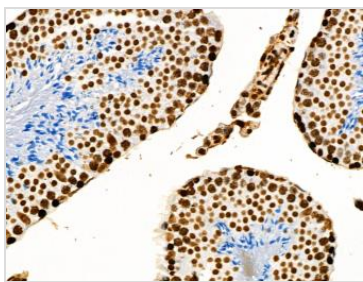
PROPERTIES

Form	Liquid
Buffer	PBS pH 7.4, 150mM NaCl, 0.02% sodium azide, 50% glycerol
Storage	Store as concentrated solution. Centrifuge briefly prior to opening vial. For short-term storage (1-2 weeks), store at 4°C. For long-term storage, aliquot and store at -20°C or below. Avoid multiple freeze-thaw cycles.
Concentration	1 mg/ml (Please refer to the vial label for the specific concentration.)
Immunogen	A synthesized peptide derived from human Histone H3 around the acetylation site of Lys9/14/18/23/27.
Purification	Purified by antigen-affinity chromatography
Conjugation	Unconjugated
Note	For laboratory use only. Not for any clinical, therapeutic, or diagnostic use in humans or animals. Not for animal or human consumption.



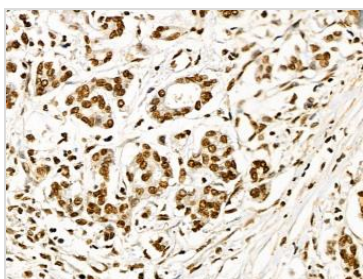
For full product information, images and publications, please visit our [website](#).

DATA IMAGES

**GTX02535 IHC-P Image**

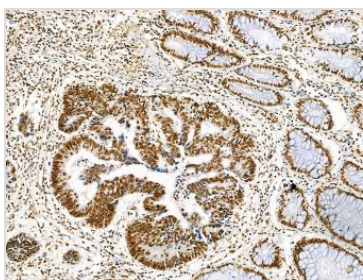
IHC-P analysis of mouse testis tissue using GTX02535 Histone H3K9K14K23K27ac (Acetyl Lys9/Lys14/Lys23/Lys27) antibody.

Antigen retrieval : Heat mediated antigen retrieval step in citrate buffer was performed.
Dilution : 1:100

**GTX02535 IHC-P Image**

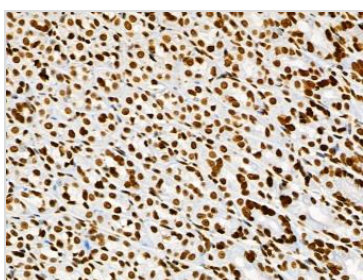
IHC-P analysis of human pancreatic cancer and adjacent normal tissues using GTX02535 Histone H3K9K14K23K27ac (Acetyl Lys9/Lys14/Lys23/Lys27) antibody.

Antigen retrieval : Heat mediated antigen retrieval step in citrate buffer was performed.
Dilution : 1:100

**GTX02535 IHC-P Image**

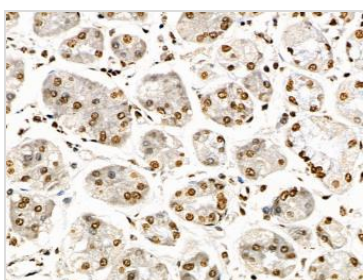
IHC-P analysis of human colorectal cancer tissue using GTX02535 Histone H3K9K14K23K27ac (Acetyl Lys9/Lys14/Lys23/Lys27) antibody.

Antigen retrieval : Heat mediated antigen retrieval step in citrate buffer was performed.
Dilution : 1:100

**GTX02535 IHC-P Image**

IHC-P analysis of rat stomach tissue using GTX02535 Histone H3K9K14K23K27ac (Acetyl Lys9/Lys14/Lys23/Lys27) antibody.

Antigen retrieval : Heat mediated antigen retrieval step in citrate buffer was performed.
Dilution : 1:100

**GTX02535 IHC-P Image**

IHC-P analysis of human gastric and adjacent normal cancer tissue using GTX02535 Histone H3K9K14K23K27ac (Acetyl Lys9/Lys14/Lys23/Lys27) antibody.

Antigen retrieval : Heat mediated antigen retrieval step in citrate buffer was performed.
Dilution : 1:100



For full product information, images and publications, please visit our [website](#).