



SZABO SCANDIC

Part of Europa Biosite

Produktinformation



Forschungsprodukte & Biochemikalien



Zellkultur & Verbrauchsmaterial



Diagnostik & molekulare Diagnostik



Laborgeräte & Service

Weitere Information auf den folgenden Seiten!
See the following pages for more information!



Lieferung & Zahlungsart

siehe unsere [Liefer- und Versandbedingungen](#)

Zuschläge

- Mindermengenzuschlag
- Trockeneiszuschlag
- Gefahrgutzuschlag
- Expressversand

SZABO-SCANDIC HandelsgmbH

Quellenstraße 110, A-1100 Wien

T. +43(0)1 489 3961-0

F. +43(0)1 489 3961-7

mail@szabo-scandic.com

www.szabo-scandic.com

[linkedin.com/company/szaboscandic](https://www.linkedin.com/company/szaboscandic) 

Growth hormone Receptor antibody

Cat No. GTX02538

Host	Rabbit
Clonality	Polyclonal
Isotype	IgG
Application	WB, IHC-P, FACS
Reactivity	Human, Rat, Sheep, Pig, Kangaroo rat

Package
100 µl

APPLICATION

Application Note

*Optimal dilutions/concentrations should be determined by the researcher.

Suggested dilution	Dilution
WB	1:300-1:1000
IHC-P	1:200-1:400
FACS	Assay dependent

Not tested in other applications.

Calculated MW 72 kDa. ([Note](#))

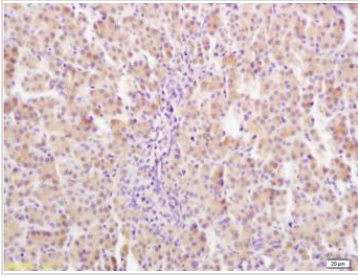
PROPERTIES

Form	Liquid
Buffer	Aqueous buffered solution, 1% BSA, 50% glycerol, 0.09% sodium azide
Storage	Store as concentrated solution. Centrifuge briefly prior to opening vial. For short-term storage (1-2 weeks), store at 4°C. For long-term storage, aliquot and store at -20°C or below. Avoid multiple freeze-thaw cycles.
Concentration	1 mg/ml (Please refer to the vial label for the specific concentration.)
Immunogen	KLH conjugated synthetic peptide derived from human GHR (290-340/638).
Purification	Protein A purified
Conjugation	Unconjugated
Note	For laboratory use only. Not for any clinical, therapeutic, or diagnostic use in humans or animals. Not for animal or human consumption.

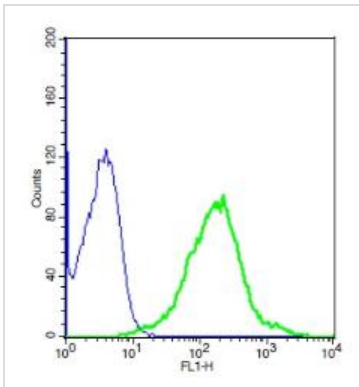


For full product information, images and publications, please visit our [website](#).

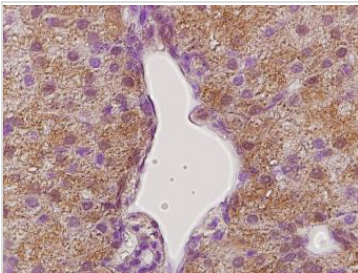
DATA IMAGES

**GTX02538 IHC-P Image**

IHC-P analysis of rat liver tissue using GTX02538 Growth hormone Receptor antibody.
Dilution : 1:400

**GTX02538 FACS Image**

FACS analysis of A549 cells using GTX02538 Growth hormone Receptor antibody.
Green : Primary antibody
Blue : Secondary antibody only control
Dilution : 1:20

**GTX02538 IHC-P Image**

IHC-P analysis of tammar wallaby (*Macropus eugenii*) liver tissue using GTX02538 Growth hormone Receptor antibody.
Dilution : 1:300



For full product information, images and publications, please visit our [website](#).