



SZABO SCANDIC

Part of Europa Biosite

Produktinformation



Forschungsprodukte & Biochemikalien



Zellkultur & Verbrauchsmaterial



Diagnostik & molekulare Diagnostik



Laborgeräte & Service

Weitere Information auf den folgenden Seiten!
See the following pages for more information!



Lieferung & Zahlungsart

siehe unsere [Liefer- und Versandbedingungen](#)

Zuschläge

- Mindermengenzuschlag
- Trockeneiszuschlag
- Gefahrgutzuschlag
- Expressversand

SZABO-SCANDIC HandelsgmbH

Quellenstraße 110, A-1100 Wien

T. +43(0)1 489 3961-0

F. +43(0)1 489 3961-7

mail@szabo-scandic.com

www.szabo-scandic.com

[linkedin.com/company/szaboscandic](https://www.linkedin.com/company/szaboscandic) 

GDNF antibody

Cat No. GTX02540

Host	Rabbit
Clonality	Polyclonal
Isotype	IgG
Application	WB, IHC-P, FACS
Reactivity	Human, Mouse, Rat, Rabbit, Bovine

Package
100 µl

APPLICATION

Application Note

*Optimal dilutions/concentrations should be determined by the researcher.

Suggested dilution	Dilution
WB	1:300-1:1000
IHC-P	1:200-1:400
FACS	Assay dependent

Not tested in other applications.

Calculated MW 24 kDa. ([Note](#))

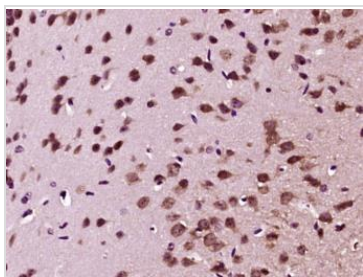
PROPERTIES

Form	Liquid
Buffer	Aqueous buffered solution, 1% BSA, 50% glycerol, 0.09% sodium azide
Storage	Store as concentrated solution. Centrifuge briefly prior to opening vial. For short-term storage (1-2 weeks), store at 4°C. For long-term storage, aliquot and store at -20°C or below. Avoid multiple freeze-thaw cycles.
Concentration	1 mg/ml (Please refer to the vial label for the specific concentration.)
Immunogen	KLH conjugated synthetic peptide derived from human GDNF (166-211/211)
Purification	Protein A purified
Conjugation	Unconjugated
Note	For laboratory use only. Not for any clinical, therapeutic, or diagnostic use in humans or animals. Not for animal or human consumption.



For full product information, images and publications, please visit our [website](#).

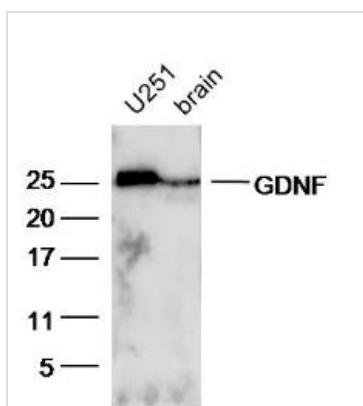
DATA IMAGES

**GTX02540 IHC-P Image**

IHC-P analysis of mouse brain tissue using GTX02540 GDNF antibody.

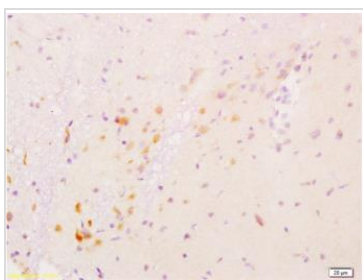
Antigen retrieval : Boiling in sodium citrate buffer (pH6) for 15min

Dilution : 1:400

**GTX02540 WB Image**

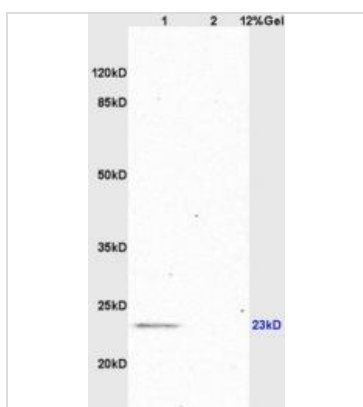
WB analysis of U251 cell (lane 1) and mouse brain tissue (lane 2) lysates using GTX02540 GDNF antibody.

Dilution : 1:300

**GTX02540 IHC-P Image**

IHC-P analysis of rat brain tissue using GTX02540 GDNF antibody.

Dilution : 1:200

**GTX02540 WB Image**

WB analysis of rat brain (lane 1) and rat heart (lane 2) tissue lysates using GTX02540 GDNF antibody.

Dilution : 1:200



For full product information, images and publications, please visit our [website](#).