



SZABO SCANDIC

Part of Europa Biosite

Produktinformation



Forschungsprodukte & Biochemikalien



Zellkultur & Verbrauchsmaterial



Diagnostik & molekulare Diagnostik



Laborgeräte & Service

Weitere Information auf den folgenden Seiten!
See the following pages for more information!



Lieferung & Zahlungsart

siehe unsere [Liefer- und Versandbedingungen](#)

Zuschläge

- Mindermengenzuschlag
- Trockeneiszuschlag
- Gefahrgutzuschlag
- Expressversand

SZABO-SCANDIC HandelsgmbH

Quellenstraße 110, A-1100 Wien

T. +43(0)1 489 3961-0

F. +43(0)1 489 3961-7

mail@szabo-scandic.com

www.szabo-scandic.com

[linkedin.com/company/szaboscandic](https://www.linkedin.com/company/szaboscandic) 

NTR1 antibody

Cat No. GTX02541

Host	Rabbit
Clonality	Polyclonal
Isotype	IgG
Application	WB, ICC/IF, IHC-P, IHC-Fr, FACS
Reactivity	Human, Rat

Package
50 µl

APPLICATION

Application Note

*Optimal dilutions/concentrations should be determined by the researcher.

Suggested dilution	Dilution
WB	Assay dependent
ICC/IF	Assay dependent
IHC-P	Assay dependent
IHC-Fr	Assay dependent
FACS	Assay dependent

Not tested in other applications.

Calculated MW 46 kDa. ([Note](#))

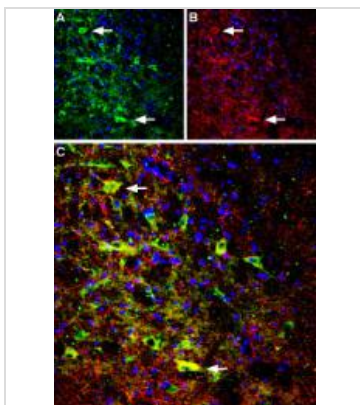
PROPERTIES

Form	Liquid
Buffer	PBS pH 7.4, 1% BSA, 0.05% sodium azide
Storage	Store as concentrated solution. Centrifuge briefly prior to opening vial. For short-term storage (1-2 weeks), store at 4°C. For long-term storage, aliquot and store at -20°C or below. Avoid multiple freeze-thaw cycles.
Concentration	Batch dependent (Please refer to the vial label for the specific concentration.)
Immunogen	Peptide EQNRSADGQHAGGLVC corresponding to amino acid residues 209-224 of human NTSR1 (2nd extracellular loop).
Purification	Purified by antigen-affinity chromatography
Conjugation	Unconjugated
Note	For laboratory use only. Not for any clinical, therapeutic, or diagnostic use in humans or animals. Not for animal or human consumption.



For full product information, images and publications, please visit our [website](#).

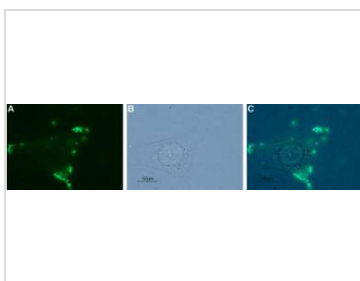
DATA IMAGES



GTX02541 IHC-Fr Image

IHC-Fr analysis of rat brain tissue sections using GTX02541 NTR1 antibody. Arrows point at examples of colocalization.

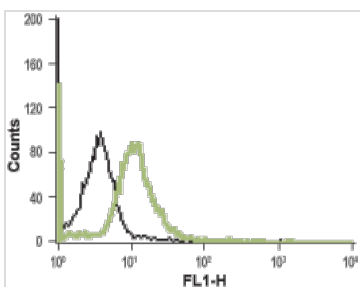
Green : NTR1 antibody
 Red : Choline acetyltransferase (ChAT) antibody
 Blue : DAPI
 Dilution : 1:100



GTX02541 ICC/IF Image

Live cell imaging analysis of MCF-7 cells using GTX02541 NTR1 antibody.

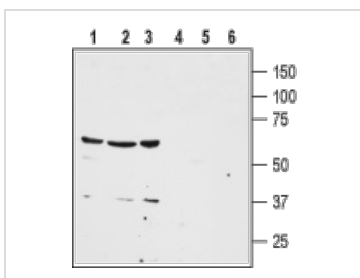
Panel A : Primary antibody
 Panel B : Live view of the cell
 Panel C : Merged images of Panel A and B
 Dilution : 1:20



GTX02541 FACS Image

FACS analysis of live intact HL-60 cells using GTX02541 NTR1 antibody.

Green : Primary antibody
 Black : Secondary antibody only control
 Dilution : 1:20



GTX02541 WB Image

WB analysis of HT-29 (lanes 1 and 4), NCI-H526 (lanes 2 and 5), and MDA-MB-468 (lanes 3 and 6) cell lysates using GTX02541 NTR1 antibody.

Lane 1-3 : Primary antibody
 Lane 4-6 : Primary antibody prior incubated with immunogen peptide
 Dilution : 1:200



For full product information, images and publications, please visit our [website](#).