



SZABO SCANDIC

Part of Europa Biosite

Produktinformation



Forschungsprodukte & Biochemikalien



Zellkultur & Verbrauchsmaterial



Diagnostik & molekulare Diagnostik



Laborgeräte & Service

Weitere Information auf den folgenden Seiten!
See the following pages for more information!



Lieferung & Zahlungsart

siehe unsere [Liefer- und Versandbedingungen](#)

Zuschläge

- Mindermengenzuschlag
- Trockeneiszuschlag
- Gefahrgutzuschlag
- Expressversand

SZABO-SCANDIC HandelsgmbH

Quellenstraße 110, A-1100 Wien

T. +43(0)1 489 3961-0

F. +43(0)1 489 3961-7

mail@szabo-scandic.com

www.szabo-scandic.com

[linkedin.com/company/szaboscandic](https://www.linkedin.com/company/szaboscandic) 

GLUT2 antibody

Cat No. GTX02542

Host	Rabbit
Clonality	Polyclonal
Isotype	IgG
Application	WB, IHC-Fr
Reactivity	Human, Mouse, Rat

Package
50 µl

APPLICATION

Application Note

*Optimal dilutions/concentrations should be determined by the researcher.

Suggested dilution	Dilution
WB	Assay dependent
IHC-Fr	Assay dependent

Not tested in other applications.

Calculated MW 57 kDa. ([Note](#))

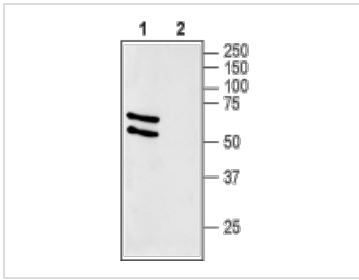
PROPERTIES

Form	Liquid
Buffer	PBS pH 7.4, 1% BSA, 0.05% sodium azide
Storage	Store as concentrated solution. Centrifuge briefly prior to opening vial. For short-term storage (1-2 weeks), store at 4°C. For long-term storage, aliquot and store at -20°C or below. Avoid multiple freeze-thaw cycles.
Concentration	Batch dependent (Please refer to the vial label for the specific concentration.)
Immunogen	Peptide (C)EFRKKS ^{GS} APPRK, corresponding to amino acid residues 496-508 of rat Glucose Transporter 2 (Intracellular, C-terminus).
Purification	Purified by antigen-affinity chromatography
Conjugation	Unconjugated
Note	For laboratory use only. Not for any clinical, therapeutic, or diagnostic use in humans or animals. Not for animal or human consumption.



For full product information, images and publications, please visit our [website](#).

DATA IMAGES



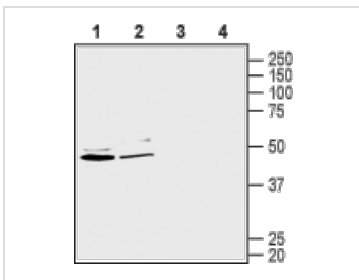
GTX02542 WB Image

WB analysis of rat liver membrane lysates using GTX02542 GLUT2 antibody.

Lane 1 : Primary antibody

Lane 2 : Primary antibody prior incubated with immunogen peptide

Dilution : 1:400



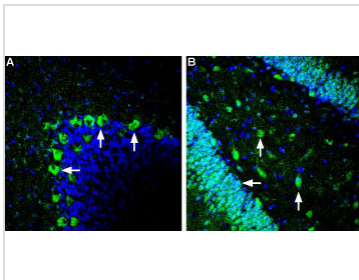
GTX02542 WB Image

WB analysis of Caco-2 (lanes 1 and 3) and HepG2 cell lysates (lanes 2 and 4) using GTX02542 GLUT2 antibody.

Lane 1 and 2 : Primary antibody

Lane 3 and 4 : Primary antibody prior incubated with immunogen peptide

Dilution : 1:400



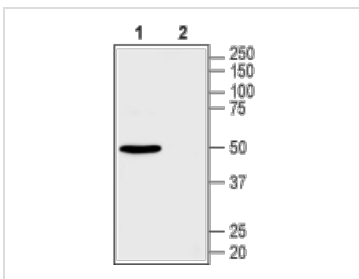
GTX02542 IHC-Fr Image

IHC-Fr analysis of rat brain tissue sections using GTX02542 GLUT2 antibody (Green) and counter stain with DAPI (Blue).

Panel A : Staining in cerebellum sections, reveals GLUT2 labeling in Purkinje cells (arrows).

Panel B : Staining in hippocampus dentate gyrus, shows labeling of both granule cells (horizontal arrow) and in hilar interneurons (vertical arrows).

Dilution : 1:120



GTX02542 WB Image

WB analysis of mouse brain membrane lysates using GTX02542 GLUT2 antibody.

Lane 1 : Primary antibody

Lane 2 : Primary antibody prior incubated with immunogen peptide

Dilution : 1:200



For full product information, images and publications, please visit our [website](#).