



SZABO SCANDIC

Part of Europa Biosite

Produktinformation



Forschungsprodukte & Biochemikalien



Zellkultur & Verbrauchsmaterial



Diagnostik & molekulare Diagnostik



Laborgeräte & Service

Weitere Information auf den folgenden Seiten!
See the following pages for more information!



Lieferung & Zahlungsart

siehe unsere [Liefer- und Versandbedingungen](#)

Zuschläge

- Mindermengenzuschlag
- Trockeneiszuschlag
- Gefahrgutzuschlag
- Expressversand

SZABO-SCANDIC HandelsgmbH

Quellenstraße 110, A-1100 Wien

T. +43(0)1 489 3961-0

F. +43(0)1 489 3961-7

mail@szabo-scandic.com

www.szabo-scandic.com

[linkedin.com/company/szaboscandic](https://www.linkedin.com/company/szaboscandic) 

CDC4 antibody

Cat No. GTX02557

Host	Rabbit
Clonality	Polyclonal
Isotype	IgG
Application	WB, IHC-P
Reactivity	Human

Package
100 µl

APPLICATION

Application Note

*Optimal dilutions/concentrations should be determined by the researcher.

Suggested dilution	Dilution
WB	Assay dependent
IHC-P	2.5 µg/ml

Not tested in other applications.

Calculated MW 80 kDa. ([Note](#))

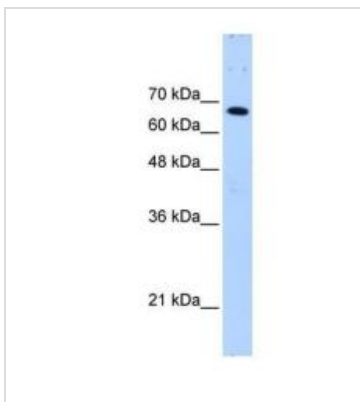
PROPERTIES

Form	Liquid
Buffer	1x PBS, 0.09% (w/v) sodium azide, 2% sucrose
Storage	Store as concentrated solution. Centrifuge briefly prior to opening vial. For short-term storage (1-2 weeks), store at 4°C. For long-term storage, aliquot and store at -20°C or below. Avoid multiple freeze-thaw cycles.
Concentration	0.5-1 mg/ml (Please refer to the vial label for the specific concentration.)
Immunogen	The immunogen is a synthetic peptide directed towards the C-terminal region of Human FBXW7.
Purification	Purified by affinity chromatography
Conjugation	Unconjugated
Note	For laboratory use only. Not for any clinical, therapeutic, or diagnostic use in humans or animals. Not for animal or human consumption.



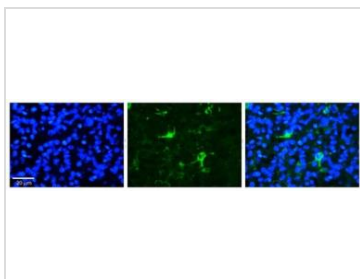
For full product information, images and publications, please visit our [website](#).

DATA IMAGES

**GTX02557 WB Image**

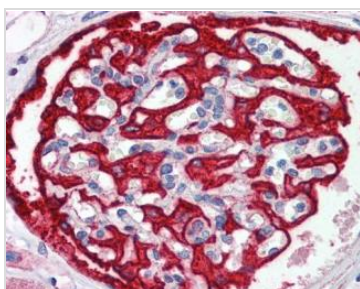
WB analysis of Jurkat cell lysate using GTX02557 CDC4 antibody.

Dilution : 0.2-1 µg/ml

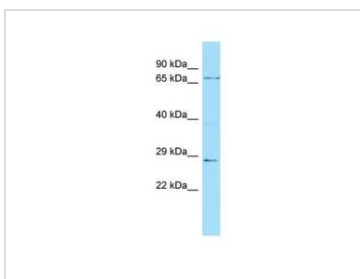
**GTX02557 IHC-P Image**

IHC-P analysis of human pineal tissue using GTX02557 CDC4 antibody. Cytoplasmic in cell bodies and processes of pinealocytes.

Dilution : 1:100

**GTX02557 IHC-P Image**

IHC-P analysis of human kidney tissue using GTX02557 CDC4 antibody.

**GTX02557 WB Image**

WB analysis of 721_B cell lysate using GTX02557 CDC4 antibody.

Dilution : 1 µg/ml



For full product information, images and publications, please visit our [website](#).