



SZABO SCANDIC

Part of Europa Biosite

Produktinformation



Forschungsprodukte & Biochemikalien



Zellkultur & Verbrauchsmaterial



Diagnostik & molekulare Diagnostik



Laborgeräte & Service

Weitere Information auf den folgenden Seiten!
See the following pages for more information!



Lieferung & Zahlungsart

siehe unsere [Liefer- und Versandbedingungen](#)

Zuschläge

- Mindermengenzuschlag
- Trockeneiszuschlag
- Gefahrgutzuschlag
- Expressversand

SZABO-SCANDIC HandelsgmbH

Quellenstraße 110, A-1100 Wien

T. +43(0)1 489 3961-0

F. +43(0)1 489 3961-7

mail@szabo-scandic.com

www.szabo-scandic.com

[linkedin.com/company/szaboscandic](https://www.linkedin.com/company/szaboscandic) 

Rhodopsin antibody [4D2]

Cat No. GTX02563

Host	Mouse
Clonality	Monoclonal
Isotype	IgG1
Application	WB, ICC/IF, IHC-P, IP, ELISA, IHC
Reactivity	Human, Mouse, Rat, Zebrafish, Bovine, Amphibians

Package
100 µg

APPLICATION

Application Note

*Optimal dilutions/concentrations should be determined by the researcher.

Suggested dilution	Dilution
WB	Assay dependent
ICC/IF	Assay dependent
IHC-P	Assay dependent
IP	Assay dependent
ELISA	Assay dependent
IHC	Assay dependent

Not tested in other applications.

Calculated MW 39 kDa. ([Note](#))

PROPERTIES

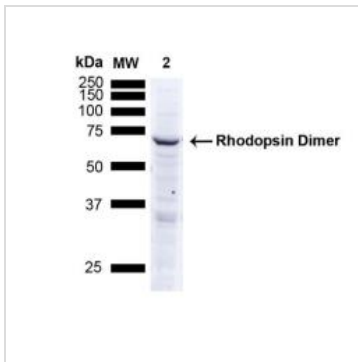
Form	Liquid
Buffer	PBS pH7.4, 50% glycerol, 0.09% sodium azide
Storage	Store as concentrated solution. Centrifuge briefly prior to opening vial. For short-term storage (1-2 weeks), store at 4°C. For long-term storage, aliquot and store at -20°C or below. Avoid multiple freeze-thaw cycles.
Concentration	1 mg/ml (Please refer to the vial label for the specific concentration.)
Immunogen	Bovine Rhodopsin
Purification	Protein G purified
Conjugation	Unconjugated
Note	For laboratory use only. Not for any clinical, therapeutic, or diagnostic use in humans or animals. Not for animal or human consumption.



For full product information, images and publications, please visit our [website](#).

Date 2021 / 02 / 04 Page 1 of 2

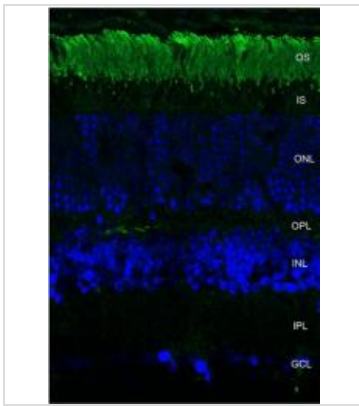
DATA IMAGES

**GTX02563 WB Image**

WB analysis of A549 cell lysate using GTX02563 Rhodopsin antibody [4D2].

Loading : 15 μ g

Dilution : 1:1000

**GTX02563 IHC Image**

IHC analysis of mouse retina tissue using GTX02563 Rhodopsin antibody [4D2]. Staining of photoreceptor outer segment (OS).

Green : Primary antibody

Blue : DAPI

Dilution : 1:1000



For full product information, images and publications, please visit our [website](#).