



SZABO SCANDIC

Part of Europa Biosite

Produktinformation



Forschungsprodukte & Biochemikalien



Zellkultur & Verbrauchsmaterial



Diagnostik & molekulare Diagnostik



Laborgeräte & Service

Weitere Information auf den folgenden Seiten!
See the following pages for more information!



Lieferung & Zahlungsart

siehe unsere [Liefer- und Versandbedingungen](#)

Zuschläge

- Mindermengenzuschlag
- Trockeneiszuschlag
- Gefahrgutzuschlag
- Expressversand

SZABO-SCANDIC HandelsgmbH

Quellenstraße 110, A-1100 Wien

T. +43(0)1 489 3961-0

F. +43(0)1 489 3961-7

mail@szabo-scandic.com

www.szabo-scandic.com

[linkedin.com/company/szaboscandic](https://www.linkedin.com/company/szaboscandic) 

ADFP Antibody

Cat No. GTX02576

Host	Rabbit
Clonality	Polyclonal
Isotype	IgG
Application	WB, ICC/IF, IHC-P, ISH
Reactivity	Human, Mouse, Rat

Package
100 µl

APPLICATION

Application Note

*Optimal dilutions/concentrations should be determined by the researcher.

Suggested dilution	Dilution
WB	2 µg/ml
ICC/IF	1:50-1:200
IHC-P	1:200
ISH	Assay dependent

Note : Antigen retrieval with sodium citrate buffer (pH 6.0) is recommended.

Not tested in other applications.

Calculated MW 47 kDa. ([Note](#))

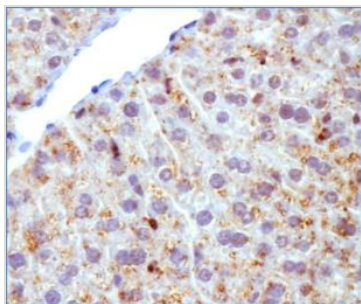
PROPERTIES

Form	Liquid
Buffer	PBS, 0.02% Sodium Azide
Storage	Store as concentrated solution. Centrifuge briefly prior to opening vial. For short-term storage (1-2 weeks), store at 4°C. For long-term storage, aliquot and store at -20°C or below. Avoid multiple freeze-thaw cycles.
Concentration	1 mg/ml (Please refer to the vial label for the specific concentration.)
Immunogen	A synthetic peptide made to a C-terminal region of mouse ADFP (within residues 350-425) [Swiss-Prot# P43883].
Purification	Purified by antigen-affinity chromatography
Conjugation	Unconjugated
Note	For laboratory use only. Not for any clinical, therapeutic, or diagnostic use in humans or animals. Not for animal or human consumption.

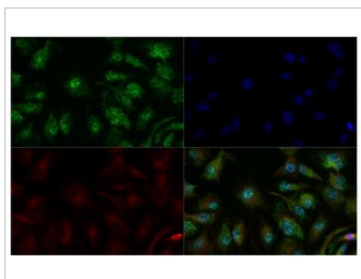


For full product information, images and publications, please visit our [website](#).

DATA IMAGES

**GTX02576 IHC-P Image**

IHC-P analysis of mouse liver tissue using GTX02576 ADFP Antibody.

**GTX02576 ICC/IF Image**

ICC/IF analysis of 4% PFA-fixed HepG2 cells using GTX02576 ADFP Antibody.

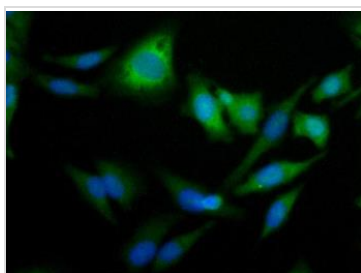
Green : Primary antibody

Red : Alpha tubulin (DM1A)

Blue : Nuclei were counterstained with DAPI

Permeabilization : 1X TBS + 0.5% Triton-X100

Dilution : 1:100

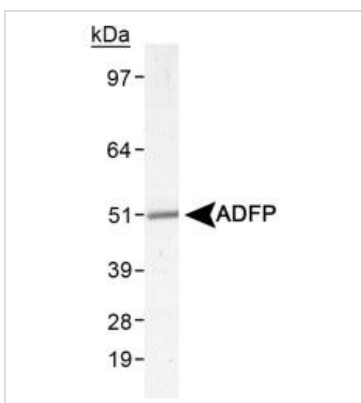
**GTX02576 ICC/IF Image**

ICC/IF analysis of HeLa cells using GTX02576 ADFP Antibody.

Green : Primary antibody

Blue : Nuclei were counterstained using Hoechst 33258

Dilution : 1:50

**GTX02576 WB Image**

WB analysis of mouse liver lysate using GTX02576 ADFP Antibody.



For full product information, images and publications, please visit our [website](#).