



SZABO SCANDIC

Part of Europa Biosite

Produktinformation



Forschungsprodukte & Biochemikalien



Zellkultur & Verbrauchsmaterial



Diagnostik & molekulare Diagnostik



Laborgeräte & Service

Weitere Information auf den folgenden Seiten!
See the following pages for more information!



Lieferung & Zahlungsart

siehe unsere [Liefer- und Versandbedingungen](#)

Zuschläge

- Mindermengenzuschlag
- Trockeneiszuschlag
- Gefahrgutzuschlag
- Expressversand

SZABO-SCANDIC HandelsgmbH

Quellenstraße 110, A-1100 Wien

T. +43(0)1 489 3961-0

F. +43(0)1 489 3961-7

mail@szabo-scandic.com

www.szabo-scandic.com

[linkedin.com/company/szaboscandic](https://www.linkedin.com/company/szaboscandic) 

TET3 antibody

Cat No. GTX02579

Host	Rabbit
Clonality	Polyclonal
Isotype	IgG
Application	WB, IHC-P, ELISA
Reactivity	Human, Mouse, Rat

Package
100 µg

APPLICATION

Application Note

*Optimal dilutions/concentrations should be determined by the researcher.

Suggested dilution	Dilution
WB	1µg/mL
IHC-P	2.5µg/mL
ELISA	Assay dependent

Not tested in other applications.

Calculated MW 179 kDa. ([Note](#))

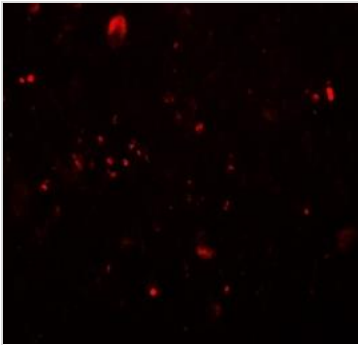
PROPERTIES

Form	Liquid
Buffer	PBS, 0.02% sodium azide
Storage	Store as concentrated solution. Centrifuge briefly prior to opening vial. For short-term storage (1-2 weeks), store at 4°C. For long-term storage, aliquot and store at -20°C or below. Avoid multiple freeze-thaw cycles.
Concentration	1 mg/ml (Please refer to the vial label for the specific concentration.)
Immunogen	TET3 antibody was raised against a 17 amino acid synthetic peptide near the carboxy terminus of human TET3 (1520 - 1570).
Purification	Purified by antigen-affinity chromatography
Conjugation	Unconjugated
Note	For laboratory use only. Not for any clinical, therapeutic, or diagnostic use in humans or animals. Not for animal or human consumption.

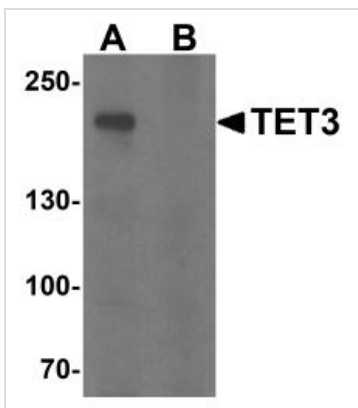


For full product information, images and publications, please visit our [website](#).

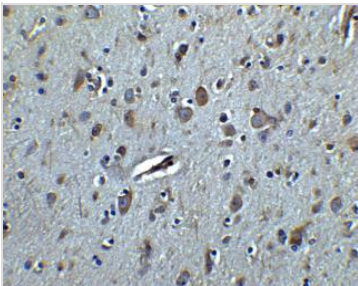
DATA IMAGES

**GTX02579 IHC-P Image**

IHC-P analysis of human brain tissue using GTX02579 TET3 antibody.
Dilution : 20 µg/ml

**GTX02579 WB Image**

WB analysis of SK-N-SH cell lysate using GTX02579 TET3 antibody.
Dilution : 1 µg/ml
Lane A : Primary antibody
Lane B : Primary antibody prior incubated with blocking peptide

**GTX02579 IHC-P Image**

IHC-P analysis of human brain tissue using GTX02579 TET3 antibody.
Dilution : 2.5 µg/ml



For full product information, images and publications, please visit our [website](#).