



SZABO SCANDIC

Part of Europa Biosite

Produktinformation



Forschungsprodukte & Biochemikalien



Zellkultur & Verbrauchsmaterial



Diagnostik & molekulare Diagnostik



Laborgeräte & Service

Weitere Information auf den folgenden Seiten!
See the following pages for more information!



Lieferung & Zahlungsart

siehe unsere [Liefer- und Versandbedingungen](#)

Zuschläge

- Mindermengenzuschlag
- Trockeneiszuschlag
- Gefahrgutzuschlag
- Expressversand

SZABO-SCANDIC HandelsgmbH

Quellenstraße 110, A-1100 Wien

T. +43(0)1 489 3961-0

F. +43(0)1 489 3961-7

mail@szabo-scandic.com

www.szabo-scandic.com

[linkedin.com/company/szaboscandic](https://www.linkedin.com/company/szaboscandic) 

Caldesmon antibody [CALD1/1424R]

Cat. No. GTX02598

Host	Rabbit
Clonality	Monoclonal
Isotype	IgG
Application	IHC-P
Reactivity	Human, Rat

Reference (1)
 Package
 100 µg

APPLICATION

Application Note

*Optimal dilutions/concentrations should be determined by the researcher.

Suggested dilution	Recommended dilution
IHC-P	1-2 µg/ml

Note : Staining of formalin-fixed tissues requires heating tissue sections in 1mM EDTA (pH 7.5-8.5) for 45 min at 95°C followed by cooling at RT for 20 minutes.

Not tested in other applications.

Calculated MW	93 kDa. (Note)
Product Note	This antibody recognizes only the 150kDa variant (h-caldesmon) in Western blots of human aortic media extracts and is unreactive with fibroblast extracts from cultivated human foreskin.

PROPERTIES

Form	Liquid
Buffer	10mM PBS, 0.05% BSA
Preservative	0.05% Sodium azide
Storage	Store as concentrated solution. Centrifuge briefly prior to opening vial. Store at 4°C.
Concentration	200 µg/ml (Please refer to the vial label for the specific concentration.)
Immunogen	Recombinant human full-length CALD1 protein
Purification	Protein A/G purified
Conjugation	Unconjugated

Note

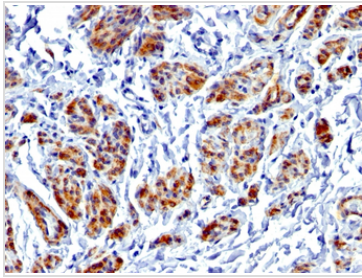
For laboratory research use only. Not for any clinical, therapeutic, or diagnostic use in humans or animals. Not for animal or human consumption.

Purchasers shall not, and agree not to enable third parties to, analyze, copy, reverse engineer or otherwise attempt to determine the structure or sequence of the product.

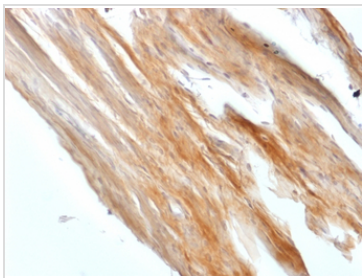


For full product information, images and publications, please visit our [website](#).

DATA IMAGES

**GTX02598 IHC-P Image**

IHC-P analysis of human uterus tissue section using GTX02598 Caldesmon antibody [CALD1/1424R].

**GTX02598 IHC-P Image**

IHC-P analysis of rat uterus tissue section using GTX02598 Caldesmon antibody [CALD1/1424R].



For full product information, images and publications, please visit our [website](#).