



# SZABO SCANDIC

Part of Europa Biosite

## Produktinformation



Forschungsprodukte & Biochemikalien



Zellkultur & Verbrauchsmaterial



Diagnostik & molekulare Diagnostik



Laborgeräte & Service

Weitere Information auf den folgenden Seiten!  
See the following pages for more information!



### Lieferung & Zahlungsart

siehe unsere [Liefer- und Versandbedingungen](#)

### Zuschläge

- Mindermengenzuschlag
- Trockeneiszuschlag
- Gefahrgutzuschlag
- Expressversand

### SZABO-SCANDIC HandelsgmbH

Quellenstraße 110, A-1100 Wien

T. +43(0)1 489 3961-0

F. +43(0)1 489 3961-7

[mail@szabo-scandic.com](mailto:mail@szabo-scandic.com)

[www.szabo-scandic.com](http://www.szabo-scandic.com)

[linkedin.com/company/szaboscandic](https://www.linkedin.com/company/szaboscandic) 

## EGFR antibody [GFR/2600R]

Cat. No. GTX02628

Host	Rabbit
Clonality	Monoclonal
Isotype	IgG
Application	IHC-P
Reactivity	Human

Package  
100 µg

## APPLICATION

## Application Note

\*Optimal dilutions/concentrations should be determined by the researcher.

## Suggested dilution Recommended dilution

IHC-P 1-2 µg/ml

**Note : Staining of formalin-fixed tissues requires heating tissue sections in 10mM Tris buffer with 1mM EDTA (pH 9.0) for 45 min at 95°C followed by cooling at RT for 20 minutes.**

Not tested in other applications.

Calculated MW 134 kDa. ([Note](#))

## PROPERTIES

Form Liquid

Buffer 10mM PBS, 0.05% BSA

Preservative 0.05% Sodium azide

Storage Store as concentrated solution. Centrifuge briefly prior to opening vial. Store at 4°C.

Concentration 200 µg/ml (Please refer to the vial label for the specific concentration.)

Immunogen KLH conjugate of human EGFRvIII-specific, 14-amino acid peptide from the predicted amino acid sequence at the fusion junction (LEEKKGNYVTDHC)

Purification Protein A/G purified

Conjugation Unconjugated

## Note

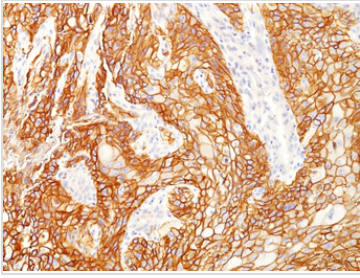
For laboratory research use only. Not for any clinical, therapeutic, or diagnostic use in humans or animals. Not for animal or human consumption.

Purchasers shall not, and agree not to enable third parties to, analyze, copy, reverse engineer or otherwise attempt to determine the structure or sequence of the product.

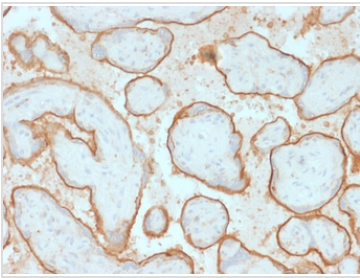


For full product information, images and publications, please visit our [website](#).

## DATA IMAGES

**GTX02628 IHC-P Image**

IHC-P analysis of human squamous cell carcinoma lung cancer section using GTX02628 EGFR antibody [GFR/2600R].

**GTX02628 IHC-P Image**

IHC-P analysis of human placenta tissue section using GTX02628 EGFR antibody [GFR/2600R].



For full product information, images and publications, please visit our [website](#).