



SZABO SCANDIC

Part of Europa Biosite

Produktinformation



Forschungsprodukte & Biochemikalien



Zellkultur & Verbrauchsmaterial



Diagnostik & molekulare Diagnostik



Laborgeräte & Service

Weitere Information auf den folgenden Seiten!
See the following pages for more information!



Lieferung & Zahlungsart

siehe unsere [Liefer- und Versandbedingungen](#)

Zuschläge

- Mindermengenzuschlag
- Trockeneiszuschlag
- Gefahrgutzuschlag
- Expressversand

SZABO-SCANDIC HandelsgmbH

Quellenstraße 110, A-1100 Wien

T. +43(0)1 489 3961-0

F. +43(0)1 489 3961-7

mail@szabo-scandic.com

www.szabo-scandic.com

[linkedin.com/company/szaboscandic](https://www.linkedin.com/company/szaboscandic) 

Involucrin antibody [IVRN/2113R]

Cat. No. GTX02654

Host	Rabbit
Clonality	Monoclonal
Isotype	IgG
Application	IHC-P
Reactivity	Human, Dog, Pig, Monkey, Gorilla

Package
100 µg

APPLICATION

Application Note

*Optimal dilutions/concentrations should be determined by the researcher.

Suggested dilution	Recommended dilution
IHC-P	1-2 µg/ml

Note : Digestion with trypsin or Protease XXV at 1mg/ml PBS for 5 min at 37°C.

Not tested in other applications.

Calculated MW 68 kDa. ([Note](#))

Product Note

In Western blotting of cultured human keratinocytes, this antibody reacts with a 120kDa protein. It stains the involucrin in a variety of sizes: 170kDa in MCF-7 cells, a doublet of ~115kDa and 150kDa in gorilla and owl monkey, 66kDa in dog, and a doublet of 105kDa in pig.

We do not recommend use of this product for Mouse samples.

PROPERTIES

Form	Liquid
Buffer	10mM PBS, 0.05% BSA
Preservative	0.05% Sodium azide
Storage	Store as concentrated solution. Centrifuge briefly prior to opening vial. Store at 4°C.
Concentration	200 µg/ml (Please refer to the vial label for the specific concentration.)
Immunogen	Recombinant human full-length Involucrin protein (IVRN). An epitope maps between codon 421-568 of human involucrin.
Purification	Protein A/G purified
Conjugation	Unconjugated



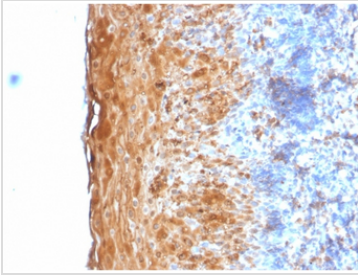
For full product information, images and publications, please visit our [website](#).

For laboratory research use only. Not for any clinical, therapeutic, or diagnostic use in humans or animals. Not for animal or human consumption.

Note

Purchasers shall not, and agree not to enable third parties to, analyze, copy, reverse engineer or otherwise attempt to determine the structure or sequence of the product.

DATA IMAGES

**GTX02654 IHC-P Image**

IHC-P analysis of human tonsil tissue section using GTX02654 Involucrin antibody [IVRN/2113R].



For full product information, images and publications, please visit our [website](#).