



# SZABO SCANDIC

Part of Europa Biosite

## Produktinformation



Forschungsprodukte & Biochemikalien



Zellkultur & Verbrauchsmaterial



Diagnostik & molekulare Diagnostik



Laborgeräte & Service

Weitere Information auf den folgenden Seiten!  
See the following pages for more information!



### Lieferung & Zahlungsart

siehe unsere [Liefer- und Versandbedingungen](#)

### Zuschläge

- Mindermengenzuschlag
- Trockeneiszuschlag
- Gefahrgutzuschlag
- Expressversand

### SZABO-SCANDIC HandelsgmbH

Quellenstraße 110, A-1100 Wien

T. +43(0)1 489 3961-0

F. +43(0)1 489 3961-7

[mail@szabo-scandic.com](mailto:mail@szabo-scandic.com)

[www.szabo-scandic.com](http://www.szabo-scandic.com)

[linkedin.com/company/szaboscandic](https://www.linkedin.com/company/szaboscandic) 

## Cytokeratin 2 antibody [KRTH/2147R]

Cat. No. GTX02662

<b>Host</b>	Rabbit
<b>Clonality</b>	Monoclonal
<b>Isotype</b>	IgG
<b>Application</b>	WB, ICC/IF, IHC-P, FACS
<b>Reactivity</b>	Human, Mouse, Rat

Package  
100 µg

## APPLICATION

## Application Note

\*Optimal dilutions/concentrations should be determined by the researcher.

Suggested dilution	Recommended dilution
WB	1-2 µg/ml
ICC/IF	1-2 µg/ml
IHC-P	0.25-0.5 µg/ml
FACS	1-2 µg/million cells

**Note : Staining of formalin-fixed tissues requires heating tissue sections in 10mM Tris buffer with 1mM EDTA (pH 9.0) for 45 min at 95°C followed by cooling at RT for 20 minutes.**

Not tested in other applications.

**Calculated MW** 66 kDa. ( [Note](#) )

**Observed MW** 50-67 kDa.

## Product Note

This antibody recognizes CK1, CK5, CK10 and CK14. It shows no reactivity with hepatocytes, pancreatic acinar cells, proximal renal tubules, endometrial glands, or with cells derived from simple epithelia.

## PROPERTIES

<b>Form</b>	Liquid
<b>Buffer</b>	10mM PBS, 0.05% BSA
<b>Preservative</b>	0.05% Sodium azide
<b>Storage</b>	Store as concentrated solution. Centrifuge briefly prior to opening vial. Store at 4°C.
<b>Concentration</b>	200 µg/ml (Please refer to the vial label for the specific concentration.)
<b>Immunogen</b>	Solubilized keratin extract from human stratum corneum
<b>Purification</b>	Protein A/G purified



For full product information, images and publications, please visit our [website](#).

**Conjugation**

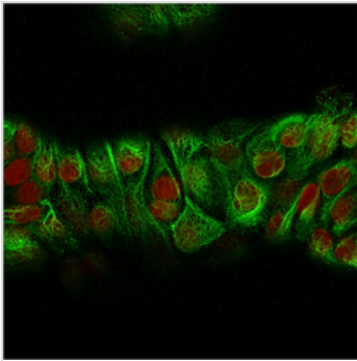
Unconjugated

**Note**

For laboratory research use only. Not for any clinical, therapeutic, or diagnostic use in humans or animals. Not for animal or human consumption.

Purchasers shall not, and agree not to enable third parties to, analyze, copy, reverse engineer or otherwise attempt to determine the structure or sequence of the product.

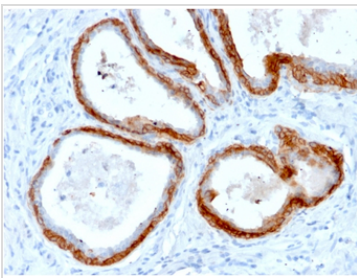
## DATA IMAGES

**GTX02662 ICC/IF Image**

ICC/IF analysis of MeOH-fixed MCF-7 cells using GTX02662 Cytokeratin 2 antibody [KRTH/2147R].

Green : Primary antibody

Red : nuclear counterstain

**GTX02662 IHC-P Image**

IHC-P analysis of human prostate carcinoma section using GTX02662 Cytokeratin 2 antibody [KRTH/2147R].



For full product information, images and publications, please visit our [website](#).