



SZABO SCANDIC

Part of Europa Biosite

Produktinformation



Forschungsprodukte & Biochemikalien



Zellkultur & Verbrauchsmaterial



Diagnostik & molekulare Diagnostik



Laborgeräte & Service

Weitere Information auf den folgenden Seiten!
See the following pages for more information!



Lieferung & Zahlungsart

siehe unsere [Liefer- und Versandbedingungen](#)

Zuschläge

- Mindermengenzuschlag
- Trockeneiszuschlag
- Gefahrgutzuschlag
- Expressversand

SZABO-SCANDIC HandelsgmbH

Quellenstraße 110, A-1100 Wien

T. +43(0)1 489 3961-0

F. +43(0)1 489 3961-7

mail@szabo-scandic.com

www.szabo-scandic.com

[linkedin.com/company/szaboscandic](https://www.linkedin.com/company/szaboscandic) 

RPA32 antibody [RPA2/3140R]

Cat. No. GTX02702

| | |
|--------------------|------------|
| Host | Rabbit |
| Clonality | Monoclonal |
| Isotype | IgG |
| Application | WB |
| Reactivity | Human |

Package
100 µg

APPLICATION

Application Note

*Optimal dilutions/concentrations should be determined by the researcher.

| Suggested dilution | Recommended dilution |
|--------------------|----------------------|
| WB | 1-2 µg/ml |

Not tested in other applications.

| | |
|----------------------|--|
| Calculated MW | 29 kDa. (Note) |
| Observed MW | 32-34 kDa. The observed M.W. is based on the following publication. PMID: 30799487 |

PROPERTIES

| | |
|----------------------|---|
| Form | Liquid |
| Buffer | 10mM PBS, 0.05% BSA |
| Preservative | 0.05% Sodium azide |
| Storage | Store as concentrated solution. Centrifuge briefly prior to opening vial. Store at 4°C. |
| Concentration | 200 µg/ml (Please refer to the vial label for the specific concentration.) |
| Immunogen | Recombinant human full-length Replication protein A2 (RPA2) protein |
| Purification | Protein A/G purified |
| Conjugation | Unconjugated |

Note

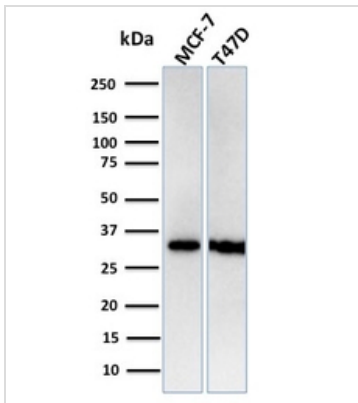
For laboratory research use only. Not for any clinical, therapeutic, or diagnostic use in humans or animals. Not for animal or human consumption.

Purchasers shall not, and agree not to enable third parties to, analyze, copy, reverse engineer or otherwise attempt to determine the structure or sequence of the product.



For full product information, images and publications, please visit our [website](#).

DATA IMAGES

**GTX02702 WB Image**

WB analysis of various samples using GTX02702 RPA32 antibody [RPA2/3140R].

Lane 1 : MCF-7 whole cell lysate

Lane 2 : T47D cell lysate



For full product information, images and publications, please visit our [website](#).