



SZABO SCANDIC

Part of Europa Biosite

Produktinformation



Forschungsprodukte & Biochemikalien



Zellkultur & Verbrauchsmaterial



Diagnostik & molekulare Diagnostik



Laborgeräte & Service

Weitere Information auf den folgenden Seiten!
See the following pages for more information!



Lieferung & Zahlungsart

siehe unsere [Liefer- und Versandbedingungen](#)

Zuschläge

- Mindermengenzuschlag
- Trockeneiszuschlag
- Gefahrgutzuschlag
- Expressversand

SZABO-SCANDIC HandelsgmbH

Quellenstraße 110, A-1100 Wien

T. +43(0)1 489 3961-0

F. +43(0)1 489 3961-7

mail@szabo-scandic.com

www.szabo-scandic.com

[linkedin.com/company/szaboscandic](https://www.linkedin.com/company/szaboscandic) 

SOX2 antibody [SOX2/3811R]

Cat. No. GTX02710

Host	Rabbit
Clonality	Monoclonal
Isotype	IgG
Application	WB, IHC-P, ELISA
Reactivity	Human, Mouse

Package
100 µg

APPLICATION

Application Note

*Optimal dilutions/concentrations should be determined by the researcher.

Suggested dilution	Recommended dilution
WB	1-2 µg/ml
IHC-P	1-2 µg/ml
ELISA	2-4 µg/ml (for coating)

Note : Staining of formalin-fixed tissues requires heating tissue sections in 10mM Tris buffer with 1mM EDTA (pH 9.0) for 45 min at 95°C followed by cooling at RT for 20 minutes.

For ELISA coating, recommend using BSA-free format (please contact us for PBS only format).

Not tested in other applications.

Calculated MW 34 kDa. ([Note](#))

PROPERTIES

Form	Liquid
Buffer	10mM PBS, 0.05% BSA
Preservative	0.05% Sodium azide
Storage	Store as concentrated solution. Centrifuge briefly prior to opening vial. Store at 4°C.
Concentration	200 µg/ml (Please refer to the vial label for the specific concentration.)
Immunogen	Recombinant fragment (within aa176-305) of human SOX2 protein
Purification	Protein A/G purified
Conjugation	Unconjugated



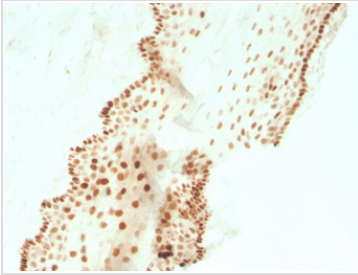
For full product information, images and publications, please visit our [website](#).

For laboratory research use only. Not for any clinical, therapeutic, or diagnostic use in humans or animals. Not for animal or human consumption.

Note

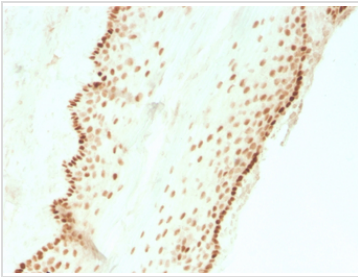
Purchasers shall not, and agree not to enable third parties to, analyze, copy, reverse engineer or otherwise attempt to determine the structure or sequence of the product.

DATA IMAGES



GTX02710 IHC-P Image

IHC-P analysis of human cervical carcinoma section using GTX02710 SOX2 antibody [SOX2/3811R].



GTX02710 IHC-P Image

IHC-P analysis of human cervical carcinoma section using GTX02710 SOX2 antibody [SOX2/3811R].



For full product information, images and publications, please visit our [website](#).