



# SZABO SCANDIC

Part of Europa Biosite

## Produktinformation



Forschungsprodukte & Biochemikalien



Zellkultur & Verbrauchsmaterial



Diagnostik & molekulare Diagnostik



Laborgeräte & Service

Weitere Information auf den folgenden Seiten!  
See the following pages for more information!



### Lieferung & Zahlungsart

siehe unsere [Liefer- und Versandbedingungen](#)

### Zuschläge

- Mindermengenzuschlag
- Trockeneiszuschlag
- Gefahrgutzuschlag
- Expressversand

### SZABO-SCANDIC HandelsgmbH

Quellenstraße 110, A-1100 Wien

T. +43(0)1 489 3961-0

F. +43(0)1 489 3961-7

[mail@szabo-scandic.com](mailto:mail@szabo-scandic.com)

[www.szabo-scandic.com](http://www.szabo-scandic.com)

[linkedin.com/company/szaboscandic](https://www.linkedin.com/company/szaboscandic) 

## Cytokeratin 8 + 18 antibody [KRT8.18/2297R]

**Cat. No. GTX02751**

|                    |            |
|--------------------|------------|
| <b>Host</b>        | Rabbit     |
| <b>Clonality</b>   | Monoclonal |
| <b>Isotype</b>     | IgG        |
| <b>Application</b> | IHC-P      |
| <b>Reactivity</b>  | Human      |

Package  
100 µg

## APPLICATION

**Application Note**

\*Optimal dilutions/concentrations should be determined by the researcher.

| Suggested dilution | Recommended dilution |
|--------------------|----------------------|
|--------------------|----------------------|

|       |           |
|-------|-----------|
| IHC-P | 1-2 µg/ml |
|-------|-----------|

**Note : Staining of formalin-fixed tissues requires heating tissue sections in 10mM Tris buffer with 1mM EDTA (pH 9.0) for 45 min at 95°C followed by cooling at RT for 20 minutes.**

Not tested in other applications.

**Product Note**

This antibody cocktail recognizes all simple epithelia including glandular epithelium, for example thyroid, female breast, gastrointestinal tract, respiratory tract, and urogenital tract including transitional epithelium.

## PROPERTIES

|                      |   |
|----------------------|---|
| <b>Form</b>          | Liquid  |
| <b>Buffer</b>        | 10mM PBS, 0.05% BSA   |
| <b>Preservative</b>  | 0.05% Sodium azide  |
| <b>Storage</b>       | Store as concentrated solution. Centrifuge briefly prior to opening vial. Store at 4°C. |
| <b>Concentration</b> | 200 µg/ml (Please refer to the vial label for the specific concentration.)              |
| <b>Immunogen</b>     | Recombinant full-length human KRT8/18 protein   |
| <b>Purification</b>  | Protein A/G purified  |
| <b>Conjugation</b>   | Unconjugated  |

**Note**

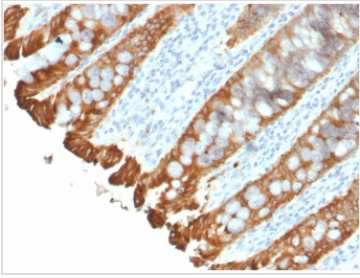
For laboratory research use only. Not for any clinical, therapeutic, or diagnostic use in humans or animals. Not for animal or human consumption.

Purchasers shall not, and agree not to enable third parties to, analyze, copy, reverse engineer or otherwise attempt to determine the structure or sequence of the product.



For full product information, images and publications, please visit our [website](#).

## DATA IMAGES

**GTX02751 IHC-P Image**

IHC-P analysis of human colon tissue section using GTX02751 Cytokeratin 8 + 18 antibody [KRT8.18/2297R].



For full product information, images and publications, please visit our [website](#).