



# SZABO SCANDIC

Part of Europa Biosite

## Produktinformation



Forschungsprodukte & Biochemikalien



Zellkultur & Verbrauchsmaterial



Diagnostik & molekulare Diagnostik



Laborgeräte & Service

Weitere Information auf den folgenden Seiten!  
See the following pages for more information!



### Lieferung & Zahlungsart

siehe unsere [Liefer- und Versandbedingungen](#)

### Zuschläge

- Mindermengenzuschlag
- Trockeneiszuschlag
- Gefahrgutzuschlag
- Expressversand

### SZABO-SCANDIC HandelsgmbH

Quellenstraße 110, A-1100 Wien

T. +43(0)1 489 3961-0

F. +43(0)1 489 3961-7

[mail@szabo-scandic.com](mailto:mail@szabo-scandic.com)

[www.szabo-scandic.com](http://www.szabo-scandic.com)

[linkedin.com/company/szaboscandic](https://www.linkedin.com/company/szaboscandic) 

## MHC Class II antibody [HLA-Pan/2967R]

Cat. No. GTX02758

Host	Rabbit
Clonality	Monoclonal
Isotype	IgG
Application	WB, ICC/IF, IHC-P, FACS, ELISA, Protein Array
Reactivity	Human

Package  
100 µg

## APPLICATION

## Application Note

\*Optimal dilutions/concentrations should be determined by the researcher.

Suggested dilution	Recommended dilution
WB	1-2 µg/ml
ICC/IF	1-2 µg/ml
IHC-P	1-2 µg/ml
FACS	1-2 µg/million cells
ELISA	2-5 µg/ml (for coating)
Protein Array	Assay dependent

**Note : Staining of formalin-fixed tissues requires heating tissue sections in 10mM Tris buffer with 1mM EDTA (pH 9.0) for 45 min at 95°C followed by cooling at RT for 20 minutes.**

**For ELISA coating, recommend using BSA-free format (please contact us for PBS only format).**

Not tested in other applications.

**Observed MW** 33-35 kDa. The observed M.W. is based on the following publication. PMID: 9931307

**Product Note** It reacts with a common epitope of human major histocompatibility (MHC) class II antigens, HLA-DP, -DQ and -DR.

## PROPERTIES

Form	Liquid
Buffer	10mM PBS, 0.05% BSA
Preservative	0.05% Sodium azide
Storage	Store as concentrated solution. Centrifuge briefly prior to opening vial. Store at 4°C.
Concentration	200 µg/ml (Please refer to the vial label for the specific concentration.)
Immunogen	Non-T, non-B human acute lymphoblastic leukemia REH6 cell line
Purification	Protein A/G purified



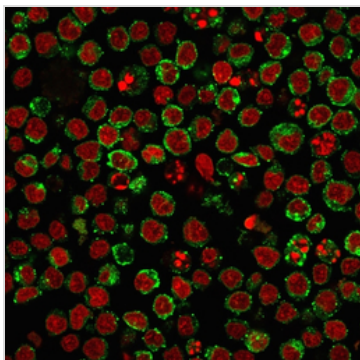
For full product information, images and publications, please visit our [website](#).

**Conjugation** Unconjugated

For laboratory research use only. Not for any clinical, therapeutic, or diagnostic use in humans or animals. Not for animal or human consumption.

**Note** Purchasers shall not, and agree not to enable third parties to, analyze, copy, reverse engineer or otherwise attempt to determine the structure or sequence of the product.

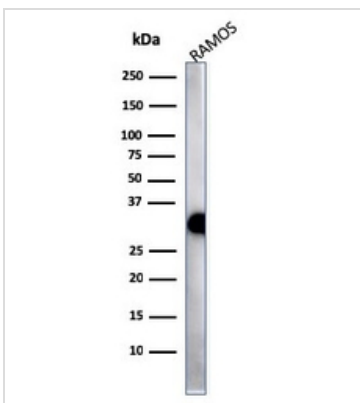
DATA IMAGES



**GTX02758 ICC/IF Image**

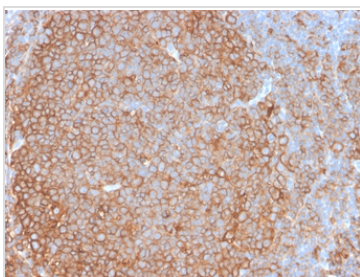
ICC/IF analysis of PFA fixed Ramos cells using GTX02758 MHC Class II antibody [HLA-Pan/2967R].

Green : Primary antibody  
Red : nuclear counterstain



**GTX02758 WB Image**

WB analysis of Ramos whole cell lysate using GTX02758 MHC Class II antibody [HLA-Pan/2967R].



**GTX02758 IHC-P Image**

IHC-P analysis of human tonsil tissue section using GTX02758 MHC Class II antibody [HLA-Pan/2967R].



For full product information, images and publications, please visit our [website](#).