



SZABO SCANDIC

Part of Europa Biosite

Produktinformation



Forschungsprodukte & Biochemikalien



Zellkultur & Verbrauchsmaterial



Diagnostik & molekulare Diagnostik



Laborgeräte & Service

Weitere Information auf den folgenden Seiten!
See the following pages for more information!



Lieferung & Zahlungsart

siehe unsere [Liefer- und Versandbedingungen](#)

Zuschläge

- Mindermengenzuschlag
- Trockeneiszuschlag
- Gefahrgutzuschlag
- Expressversand

SZABO-SCANDIC HandelsgmbH

Quellenstraße 110, A-1100 Wien

T. +43(0)1 489 3961-0

F. +43(0)1 489 3961-7

mail@szabo-scandic.com

www.szabo-scandic.com

[linkedin.com/company/szaboscandic](https://www.linkedin.com/company/szaboscandic) 

MHC Class II antibody [rHLA-Pan/3475]

Cat. No. GTX02759

Host	Mouse
Clonality	Monoclonal
Isotype	IgG1
Application	ICC/IF, IHC-P, FACS, ELISA
Reactivity	Human

Package
100 µg

APPLICATION

Application Note

*Optimal dilutions/concentrations should be determined by the researcher.

Suggested dilution	Recommended dilution
ICC/IF	1-2 µg/ml
IHC-P	1-2 µg/ml
FACS	1-2 µg/million cells
ELISA	1-5 µg/ml (for coating)

Note : Staining of formalin-fixed tissues requires heating tissue sections in 10mM Tris buffer with 1mM EDTA (pH 9.0) for 45 min at 95°C followed by cooling at RT for 20 minutes.

For ELISA coating, recommend using BSA-free format (please contact us for PBS only format).

Not tested in other applications.

Product Note It reacts with a common epitope of human major histocompatibility (MHC) class II antigens, HLA-DP, -DQ and -DR.

PROPERTIES

Form	Liquid
Buffer	10mM PBS, 0.05% BSA
Preservative	0.05% Sodium azide
Storage	Store as concentrated solution. Centrifuge briefly prior to opening vial. Store at 4°C.
Concentration	200 µg/ml (Please refer to the vial label for the specific concentration.)
Immunogen	Non-T, non-B human acute lymphoblastic leukemia REH6 cells
Purification	Protein A/G purified
Conjugation	Unconjugated



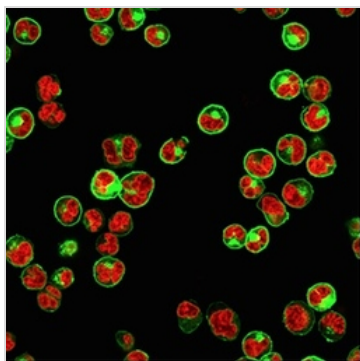
For full product information, images and publications, please visit our [website](#).

For laboratory research use only. Not for any clinical, therapeutic, or diagnostic use in humans or animals. Not for animal or human consumption.

Note

Purchasers shall not, and agree not to enable third parties to, analyze, copy, reverse engineer or otherwise attempt to determine the structure or sequence of the product.

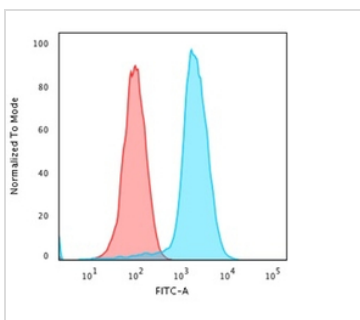
DATA IMAGES

**GTX02759 ICC/IF Image**

ICC/IF analysis of Raji cells using GTX02759 MHC Class II antibody [rHLA-Pan/3475].

Green : Primary antibody

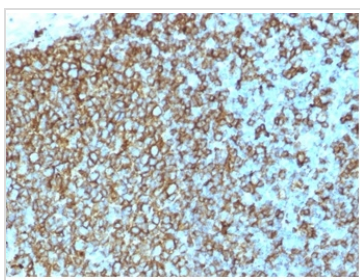
Red : nuclear counterstain

**GTX02759 FACS Image**

FACS analysis of Raji cells using GTX02759 MHC Class II antibody [rHLA-Pan/3475].

Blue : Primary antibody

Red : Isotype control

**GTX02759 IHC-P Image**

IHC-P analysis of human tonsil tissue section using GTX02759 MHC Class II antibody [rHLA-Pan/3475].



For full product information, images and publications, please visit our [website](#).