



SZABO SCANDIC

Part of Europa Biosite

Produktinformation



Forschungsprodukte & Biochemikalien



Zellkultur & Verbrauchsmaterial



Diagnostik & molekulare Diagnostik



Laborgeräte & Service

Weitere Information auf den folgenden Seiten!
See the following pages for more information!



Lieferung & Zahlungsart

siehe unsere [Liefer- und Versandbedingungen](#)

Zuschläge

- Mindermengenzuschlag
- Trockeneiszuschlag
- Gefahrgutzuschlag
- Expressversand

SZABO-SCANDIC HandelsgmbH

Quellenstraße 110, A-1100 Wien

T. +43(0)1 489 3961-0

F. +43(0)1 489 3961-7

mail@szabo-scandic.com

www.szabo-scandic.com

[linkedin.com/company/szaboscandic](https://www.linkedin.com/company/szaboscandic) 

Interferon gamma Receptor 1 antibody

Cat No. GTX02780

Host	Rabbit
Clonality	Polyclonal
Isotype	IgG
Application	WB, ICC/IF, IHC-Fr, FACS
Reactivity	Human

Package
100 µg

APPLICATION

Application Note

*Optimal dilutions/concentrations should be determined by the researcher.

Suggested dilution	Dilution
WB	0.1-0.5µg/ml
ICC/IF	0.5-1µg/ml
IHC-Fr	0.5-1µg/ml
FACS	1-3µg/1x10 ⁶ cells

Not tested in other applications.

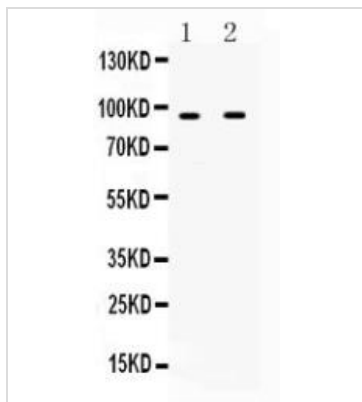
Calculated MW 54 kDa. ([Note](#))

PROPERTIES

Form	Liquid
Buffer	4mg Trehalose, 0.9mg NaCl, 0.2mg Na ₂ HPO ₄ , 0.05mg NaN ₃
Storage	Store as concentrated solution. Centrifuge briefly prior to opening vial. For short-term storage (1-2 weeks), store at 4°C. For long-term storage, aliquot and store at -20°C or below. Avoid multiple freeze-thaw cycles.
Concentration	0.5 mg/ml (Please refer to the vial label for the specific concentration.)
Immunogen	A synthetic peptide corresponding to a sequence at the C-terminus of human IFNGR1 (443-484aa QELITVIKAPTSFGYDKPHVLVDLLVDDSGKESLIGYRPTED), different from the related mouse sequence by seventeen amino acids.
Purification	Purified by antigen-affinity chromatography
Conjugation	Unconjugated
Note	For laboratory use only. Not for any clinical, therapeutic, or diagnostic use in humans or animals. Not for animal or human consumption.



For full product information, images and publications, please visit our [website](#).

DATA IMAGES

GTX02780 WB Image

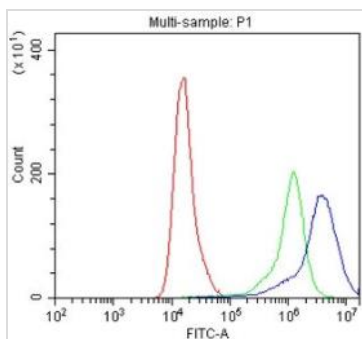
WB analysis of various cell lysates using GTX02780 Interferon gamma Receptor 1 antibody.

Lane 1 : HepG2 whole cell lysate

Lane 2 : SKOV3 whole cell lysate

Dilution : 0.5 µg/ml

Loading : 50µg


GTX02780 FACS Image

FACS analysis of A549 cells using GTX02780 Interferon gamma Receptor 1 antibody.

Blue : Primary antibody

Green : Isotype control

Red : Cell only control

Antibody amount : 1µg/1x10⁶ cells for 30 min at 20°C



For full product information, images and publications, please visit our [website](#).