



# SZABO SCANDIC

Part of Europa Biosite

## Produktinformation



Forschungsprodukte & Biochemikalien



Zellkultur & Verbrauchsmaterial



Diagnostik & molekulare Diagnostik



Laborgeräte & Service

Weitere Information auf den folgenden Seiten!  
See the following pages for more information!



### Lieferung & Zahlungsart

siehe unsere [Liefer- und Versandbedingungen](#)

### Zuschläge

- Mindermengenzuschlag
- Trockeneiszuschlag
- Gefahrgutzuschlag
- Expressversand

### SZABO-SCANDIC HandelsgmbH

Quellenstraße 110, A-1100 Wien

T. +43(0)1 489 3961-0

F. +43(0)1 489 3961-7

[mail@szabo-scandic.com](mailto:mail@szabo-scandic.com)

[www.szabo-scandic.com](http://www.szabo-scandic.com)

[linkedin.com/company/szaboscandic](https://www.linkedin.com/company/szaboscandic) 

## Human APP alpha (extracellular region) protein, His tag

**Cat No. GTX02796-pro****Species** Human**Package**

50 µg

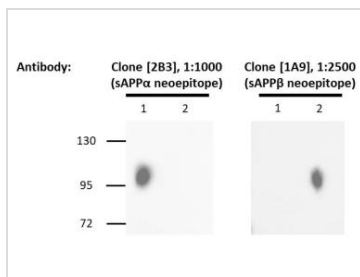
## APPLICATION

**Observed MW** ~100 kDa.

## PROPERTIES

**Form** Liquid**Buffer** PBS, 20% Glycerol**Storage** Store as concentrated solution. Centrifuge briefly prior to opening vial. For short-term storage (at least 1 month), store at 4°C. For long-term storage, aliquot and store at -20°C or below. Avoid multiple freeze-thaw cycles.**Concentration** batch dependent (Please refer to the vial label for the specific concentration.)**Region/Sequence** N-terminal 10 x His tagged ; 18-612 aa (Uniprot #P05067-4)**Expression System** HEK293 cells**Purity** > 95% by SDS-PAGE**Endotoxin** < 0.1 ng/µg (1 IEU/µg) determined by LAL method**Conjugation** Unconjugated**Note** For laboratory use only. Not for any clinical, therapeutic, or diagnostic use in humans or animals. Not for animal or human consumption.

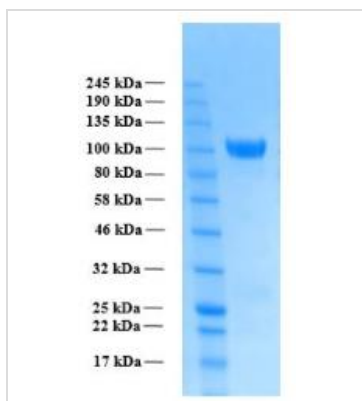
## DATA IMAGES

**GTX02796-pro Image**

WB analysis of GTX02796-pro Human APP alpha (extracellular region) protein and GTX02797-pro Human APP beta (extracellular region) protein using APP alpha specific antibody (clone[2B3]) (left panel) or APP beta specific antibody (clone [1A9]) (right panel).



For full product information, images and publications, please visit our [website](#).

**GTX02796-pro Image**

SDS-PAGE of GTX02796-pro Human APP alpha (extracellular region) protein.



For full product information, images and publications, please visit our [website](#).